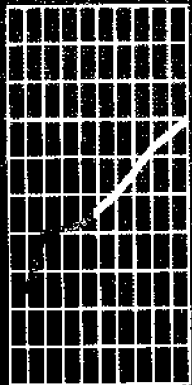




February 1996

Labour Force

New South Wales and Australian Capital Territory





EMBARGOED UNTIL 11.30 A.M. 31 MAY 1996

**LABOUR FORCE
NEW SOUTH WALES AND AUSTRALIAN CAPITAL TERRITORY
FEBRUARY 1996**

**Gregory W. Bray
Deputy Commonwealth Statistician**

© Commonwealth of Australia 1996

Produced by the Australian Government Printing Service

CONTENTS

SECTION 1: SUMMARY OF FINDINGS

	Page
New South Wales	1
Australian Capital Territory	5
<i>Graphs</i> Employed persons, NSW, February 1984 – February 1996	1
Unemployment rate, NSW and Australia, February 1984 – February 1996	1
Unemployment rate, Regions of NSW, February 1996	3
Average duration of unemployment, NSW, February 1994 – February 1996	4
Employed persons, ACT, February 1984 – February 1996	5
Unemployment rate, ACT and Australia, February 1984 – February 1996	5
Unemployment rate by age, ACT, February 1994 – February 1996	6
Average duration of unemployment, ACT, February 1994 – February 1996	6

SECTION 2: NEW SOUTH WALES

Labour Force Status

<i>Tables</i> Labour force status, NSW—	
1 Original series	9
2 Seasonally adjusted and trend series	10
3 Age	12
4 Aged 15–24 (single years) by full-time educational attendance	13
5 Family status	14
<i>Graphs</i> Trend series, NSW, February 1994 – February 1996—	
Employed males	11
Employed females	11
Unemployed males	11
Unemployed females	11
Male unemployment rate	11
Female unemployment rate	11
Male participation rate	11
Female participation rate	11

INQUIRIES

- *for further information about statistics in this publication, and the availability of related unpublished statistics, contact the following—*
ABS NSW office — Elizabeth Pogson on Sydney (02) 268 4212 or Client Services Statistical Support on Sydney (02) 268 4398
ABS ACT office — Tim Power on Canberra (06) 207 0244
- *for information about other ABS statistics and services, please refer to the last page of this publication.*

	Page
Persons aged 15–19 in the labour force, NSW: Full-time attendance at school or a tertiary educational institution, February 1994 – February 1996—	
Employed	12
Unemployed	12
 Employed Persons	
<i>Tables</i> Employed persons, NSW—	
6 Status in employment	14
7 Age	15
8 Industry	16
9 Occupation	18
<i>Graphs</i> Annual change in employment by age, NSW, February 1995 – February 1996	15
Employment by industry division, NSW, February 1996	17
Annual change in employment by occupation group, NSW, February 1995 – February 1996	19
 Unemployed Persons	
<i>Tables</i> Unemployed persons, NSW—	
10 Age	20
11 Unemployment rate by age	20
12 Industry and occupation of last full-time job	21
13 Duration of unemployment	22
14 Unemployment rate by birthplace and period of arrival	22
15 Duration of unemployment by age	23
<i>Graphs</i> Unemployment rate by age, NSW, February 1994 – February 1996	21
Unemployment rate by period of arrival of overseas born, NSW, February 1996	22
 Regional Data	
<i>Tables</i> Labour force status—	
16 Sydney Major Statistical Region	24
17 Balance of NSW Major Statistical Region	25
18 Regions of NSW	26
Employed persons—	
19 Industry and occupation, Sydney Major Statistical Region and Balance of NSW Major Statistical Region	34

	Page
SECTION 3:	
AUSTRALIAN CAPITAL TERRITORY	
Labour Force Status	
<i>Tables</i> Labour force status, ACT—	
20 Original series	36
21 Trend series	36
22 Age	38
23 Non-institutionalised persons: Birthplace and year of arrival	38
<i>Graphs</i> Trend series, ACT, February 1984 – February 1996—	
Employed males	37
Employed females	37
Unemployed males	37
Unemployed females	37
Male unemployment rate	37
Female unemployment rate	37
Male participation rate	37
Female participation rate	37
Employed Persons	
<i>Table</i> 24 Employed persons, industry and occupation, ACT	39
<i>Graph</i> Employment by industry division, ACT, February 1996	39
Unemployed Persons	
<i>Table</i> 25 Long-term unemployment, ACT	40
<i>Graph</i> Long-term unemployed as a proportion of total unemployed, ACT, February 1994 – February 1996	40
GENERAL INFORMATION	
	Labour force supplementary topics 41
	Explanatory notes 42
	Technical note on data reliability 47
APPENDIX	
	Regions of NSW and their statistical local areas 53
MAPS	
	Regions of NSW 58
	Regions of Sydney Major Statistical Region 58



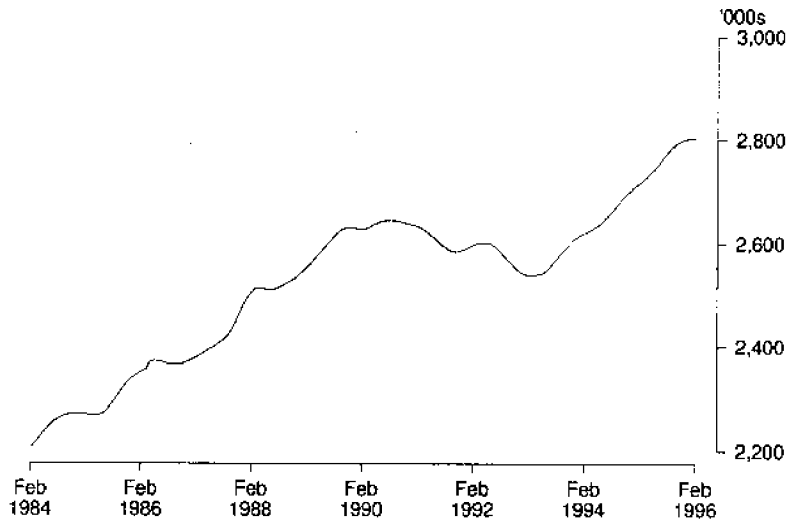
SUMMARY OF FINDINGS

NEW SOUTH WALES

TREND ESTIMATES

The trend estimate of **employed** people in NSW increased each month between March 1993 and January 1996. In February 1996 the estimate decreased slightly and stood at 2,801,800. This was 10.5% higher than the March 1993 trough.

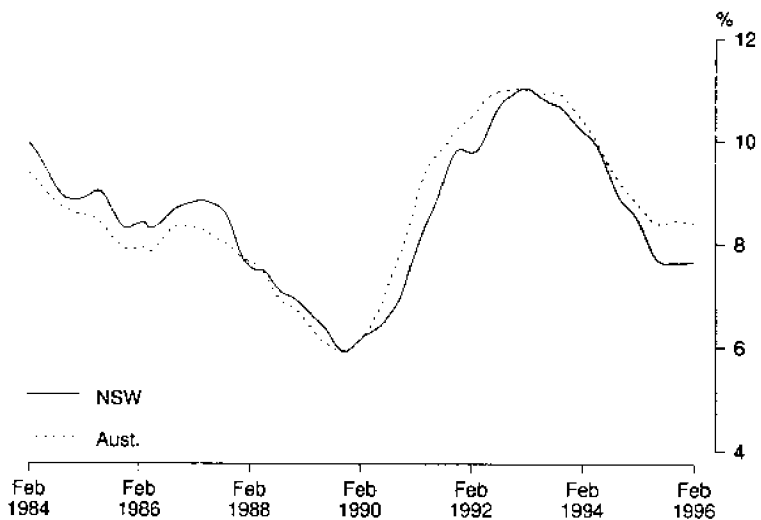
EMPLOYED PERSONS, NSW
Trend



The trend estimate of **unemployed** people reached a peak of 315,500 in January 1993. The trend then generally fell, to reach a low of 228,800 in July 1995. It has since risen to stand at 231,900 in February 1996.

The trend **unemployment rate** reached a peak of 11.0% in the period December 1992 to March 1993. The rate fell to 7.6% in July 1995 and has remained at this level.

UNEMPLOYMENT RATE
Trend



SEASONALLY ADJUSTED
ESTIMATES

The trend series **participation rate** was 62.7% in February 1996 compared to 62.1% in February 1995. In February 1996 the trend estimate of the **labour force** was 3,033,700 (6.6% above the April 1993 trough).

In February 1996, the seasonally adjusted estimate of **employment** in NSW was 2,791,200, compared to 2,798,300 in January 1996. Despite decreases in each of the last three months, the February figure was 72,500 (2.7%) higher than a year ago.

The seasonally adjusted estimate of **unemployment** was 234,400 in February 1996. This was 25,900 (10%) lower than in February 1995. Males represented 59% of the unemployed in February 1996, compared with 56% a year ago.

The seasonally adjusted **unemployment rate** fell from 7.8% in January 1996 to 7.7% in February. This compared to a rate of 8.7% in February 1995. The rate was 8.0% for males and 7.4% for females in February 1996.

The seasonally adjusted estimate of the **participation rate** fell from 62.8% in January 1996 to 62.5% in February. The rate was 72.9% for males and 52.6% for females. In February 1996 the seasonally adjusted **labour force** estimate decreased by 8,300 over the previous month to stand at 3,025,600.

LABOUR FORCE, NSW: TREND AND SEASONALLY ADJUSTED ESTIMATES

	Labour force		Unemployment rate %	Participation rate %
	Employed '000s	Unemployed '000s		
TREND				
1995—				
November	2 797.9	231.2	7.6	62.8
December	2 801.0	231.4	7.6	62.8
1996—				
January	2 802.5	231.8	7.6	62.8
February	2 801.8	231.9	7.6	62.7
SEASONALLY ADJUSTED				
1995—				
November	2 808.1	241.2	7.9	63.3
December	2 807.3	218.3	7.2	62.7
1996—				
January	2 798.3	235.7	7.8	62.8
February	2 791.2	234.4	7.7	62.5

REGIONS OF NSW

While the Labour Force Survey is designed primarily to produce reliable estimates at the national and State/Territory level, it also delivers estimates for a number of regions within States. As with national and State estimates, regional labour force estimates are subject to sampling error. Since estimates for regions are components of corresponding estimates at the State level — and are thus based on a considerably smaller sample size — they are subject to higher relative standard errors. Care should therefore be taken in interpretation of regional estimates, particularly month to month movements.

Sydney In February 1996 the estimate of the number of people **employed** in the Sydney Major Statistical Region (MSR) was 1,794,200. This was an increase of 35,700 (2%) in the 12 months since February 1995.

The **unemployment rate** was 7.8% in February 1996 compared to 9.1% in February last year. The rate was 7.9% for males and 7.6% for females.

The **highest unemployment rates** within Sydney MSR occurred in Fairfield–Liverpool Statistical Region (SR) with 17.6%, Central Western Sydney SR (14.3%) and Fairfield–Liverpool and Outer South Western Sydney SRs (12.9%).

The **participation rate** for Sydney MSR was 64.3% overall with a rate of 74.7% for males and 54.4% for females. Rates varied from 57.1% in Gosford–Wyong SR to 70.0% in Blacktown–Baulkham Hills SR.

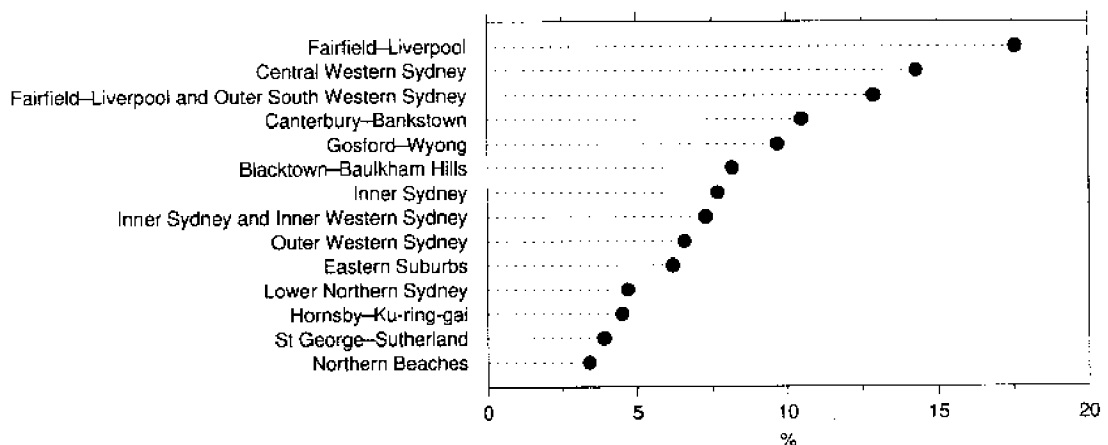
Balance of NSW In February 1996 the number of **employed** people in this area of NSW was 977,400, an increase of 36,200 (3.8%) over the past year.

The **unemployment rate** in February was 10.0% compared to 10.9% in January and 10.8% in February last year. The unemployment rate varied from 6.3% in Northern, Far West–North Western and Central West (SRs) to 13.4% in Richmond–Tweed and Mid-North Coast (SRs).

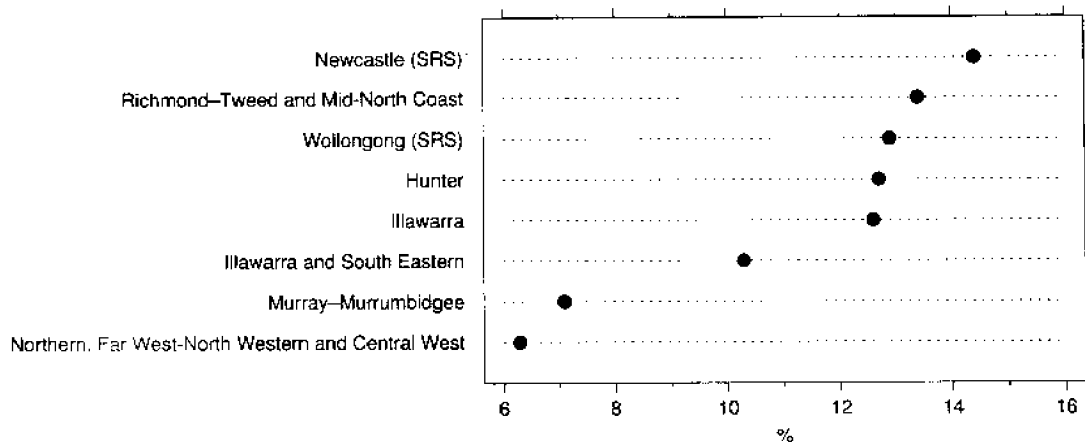
The **participation rate** for the Balance of NSW MSR was 59.9% in February 1996. The rate was 70.6% for males and 49.5% for females.

UNEMPLOYMENT RATE, REGIONS OF NSW, FEBRUARY 1996

Sydney MSR



Balance of NSW MSR



AGE

In February 1996, unemployment rates were highest for 15–19 year olds (20.7%) and 20–24 year olds (12.7%) and lowest for 45–54 year olds (5.8%). The unemployment rates for both 15–19 year olds and 20–24 year olds were slightly lower than 12 months ago.

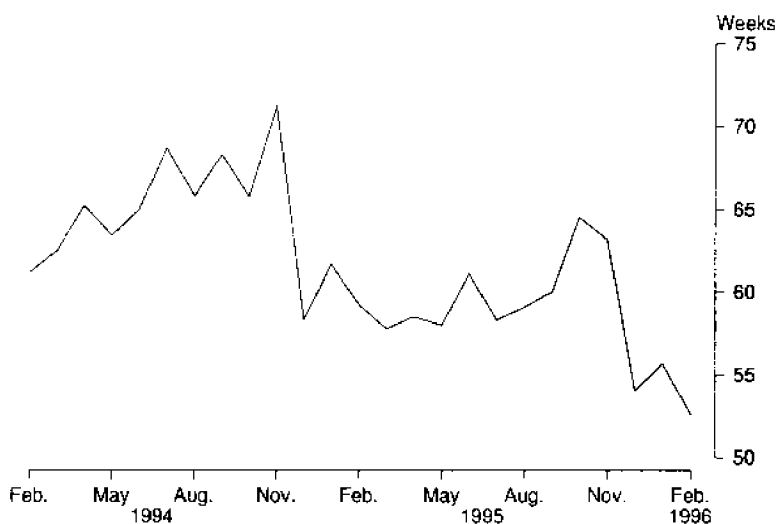
An estimated 41% of unemployed 15–19 year olds were looking for part-time work, the majority being students studying full-time. For teenagers who were not full-time students, the unemployment rate in February 1996 was 20.1%.

Part-time workers represented an estimated 23% of all employed people in February 1996, but this proportion varied between the age groups. The highest levels were among those aged 15–19 years with 56% and those aged 65 years and over with 36%.

DURATION OF UNEMPLOYMENT

In February 1996 the **long term unemployed** (people unemployed 52 weeks and over) represented 30% of all unemployed people. This compared with 37% a year earlier. The average duration of unemployment was 53 weeks in February 1996 compared to 59 weeks the previous February. Average duration of unemployment increased with age reaching an average of 75 weeks for people aged 45 years and over.

AVERAGE DURATION OF UNEMPLOYMENT, NSW



INDUSTRY AND OCCUPATION

The industries with the largest number of employees in NSW in February 1996 were *Retail trade* with 412,800 (or 15% of the total) and *Manufacturing* with 362,000 (13%).

These industries also employed the largest number of people in Sydney MSR with 257,400 (14%) in *Retail trade* and 251,000 (14%) in *Manufacturing*. *Retail trade* had the largest number in Balance of NSW MSR with 16% followed by *Agriculture, forestry and fishing* (12%) and *Manufacturing* (11%).

The largest occupation group in NSW was *Clerks* with 482,800 employees (17% of the total) followed by *Salespersons and personal service workers* (17%). *Clerks* were also the largest occupation group in Sydney MSR with 20% of the total while *Labourers and related workers* were the largest group in Balance of NSW MSR with 18%.

Between February 1995 and February 1996, there were increases in employment in all occupation groups except *Labourers and related workers*.

SUMMARY OF FINDINGS AUSTRALIAN CAPITAL TERRITORY

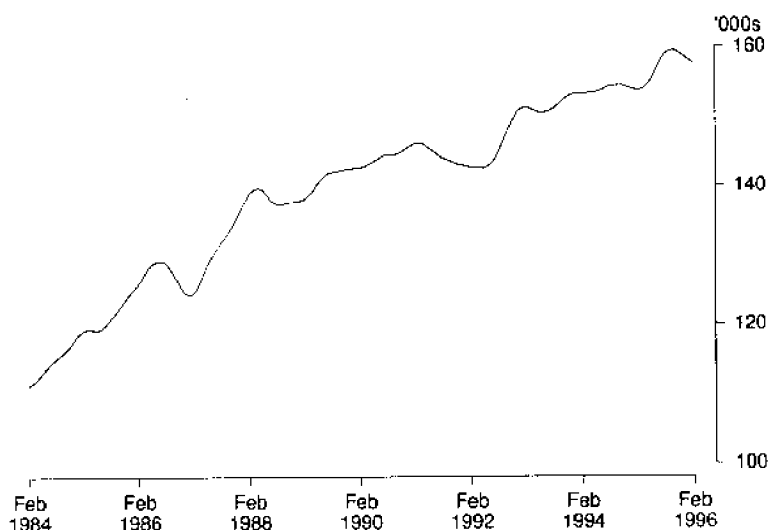
Note: Seasonally adjusted estimates are not available for the ACT.

TREND ESTIMATES

The trend estimate of the number of **employed** people in the ACT was 157,600 in February 1996. The estimate increased each month between February 1995 and October 1995, but has since declined.

EMPLOYED PERSONS, ACT

Trend

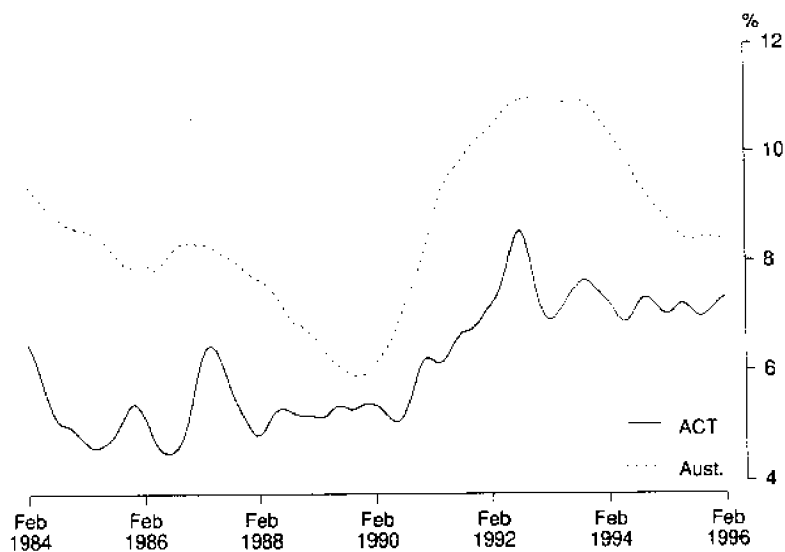


The trend estimate of **unemployment** was 12,500 in February 1996 compared with 11,600 in February 1995.

Trend estimates of the **unemployment rate** in the ACT reached a high of 8.5% in July–August 1992. In the last 12 months, the rate has fluctuated between 7.0% and 7.3%, which was the rate in both January and February 1996. The unemployment rate was 7.4% for males and 7.2% for females in February 1996.

UNEMPLOYMENT RATE

Trend



The **participation rate** was 73.4% in February 1996. The ACT labour force estimate was 170,100 in February.

AGE

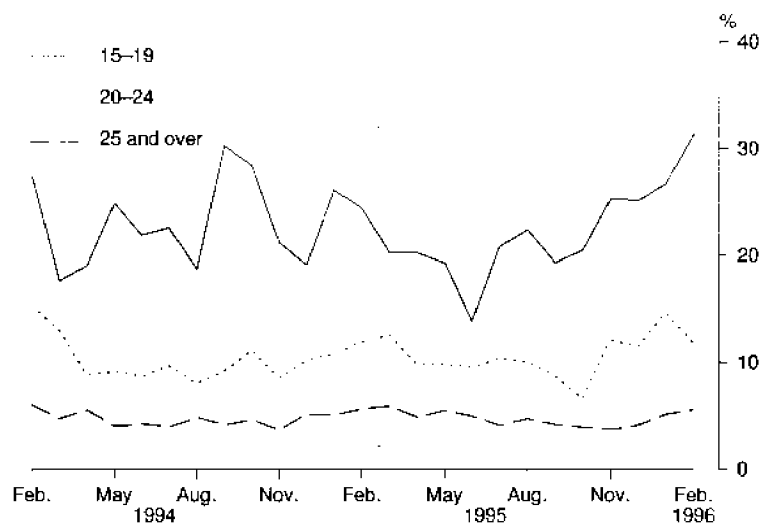
In February 1996 the unemployment rate in the ACT was highest (31.4%) for people aged 15–19 years. The rate was 11.8% for people aged 20–24 years and 5.6% for those aged 25 years and over.

Nearly three-quarters of employed 15–19 year olds were working part-time, while approximately three-fifths of the unemployed in this age group were looking for part-time work. The unemployment rate for 15–19 year olds looking for full-time work was 42.9%.

Almost three-quarters of employed 20–24 year olds and 80% of people aged 25 years and over worked full-time. On average 20–24 year olds worked 33 hours per week and those aged 25 years and over worked 37 hours per week.

The labour force participation rate was 65.9% for those aged 15–19 years and 85.4% for those aged 20–24 years.

UNEMPLOYMENT RATE BY AGE, ACT

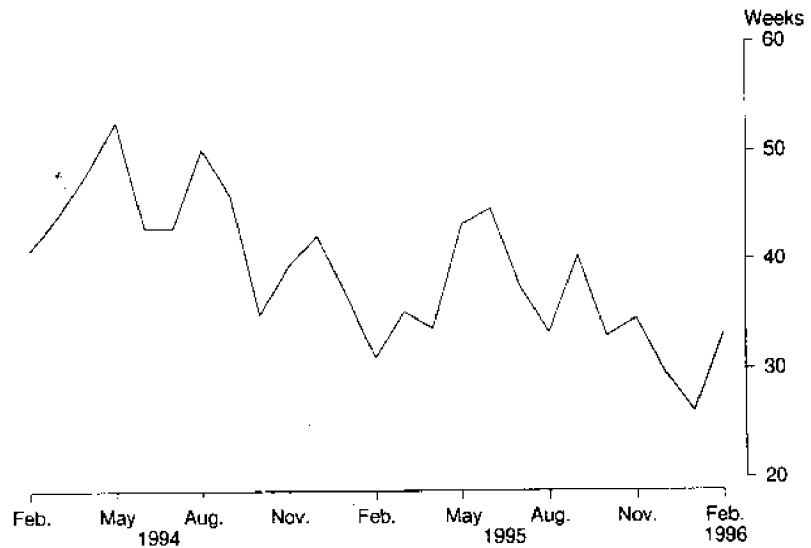


INDUSTRY AND OCCUPATION

In February 1996, one-quarter of all employed people in the ACT were employed in *Government administration and defence*, 13% were in *Retail trade* and 13% in *Property and business services*.

The largest occupation groups were *Clerks*, with 24% of employed people, and *Professionals* with 21% of the total. *Professionals* were the largest group for males with 24% and *Clerks* the largest group for females with 37%.

AVERAGE DURATION OF UNEMPLOYMENT, ACT



DURATION OF UNEMPLOYMENT

In February 1996 the average duration of unemployment in the ACT was 33 weeks. The average was 16 weeks for 15-19 year olds, 47 weeks for 20-24 year olds and 39 weeks for those aged 25 years and over.

The **long term unemployed** (people unemployed 52 weeks and over) represented 21% of all unemployed people in February 1996. This compared with 17% a year earlier.

NOTE

This publication contains estimates of the civilian labour force in NSW and the ACT derived from the Labour Force Survey component of the Monthly Population Survey, which is conducted on a sample basis throughout Australia.

Explanatory notes for the data contained within this publication can be found on Page 42.

Care should be taken in the interpretation of month-to-month movements in estimates. Survey estimates are subject to sampling and non-sampling variability as explained in the Technical note on Data Reliability on page 47.

Gregory W. Bray

Deputy Commonwealth Statistician

TABLE 1. LABOUR FORCE STATUS: ORIGINAL SERIES, NSW

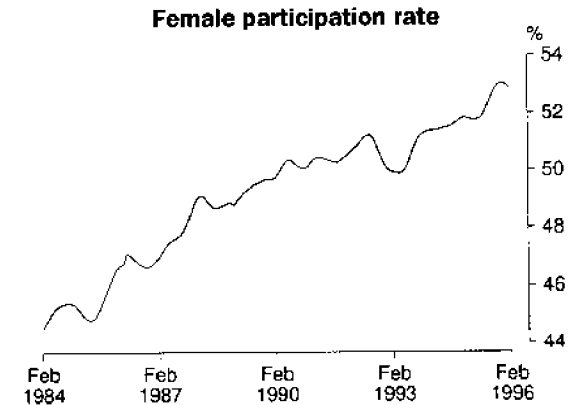
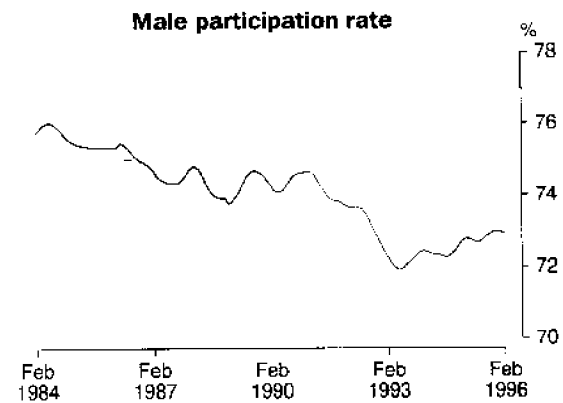
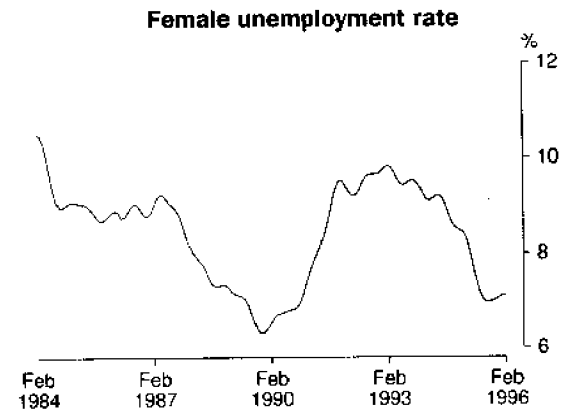
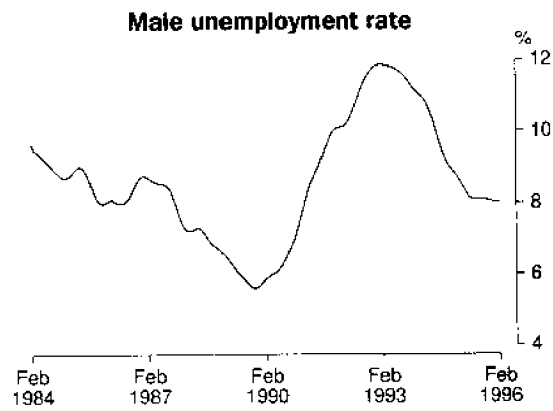
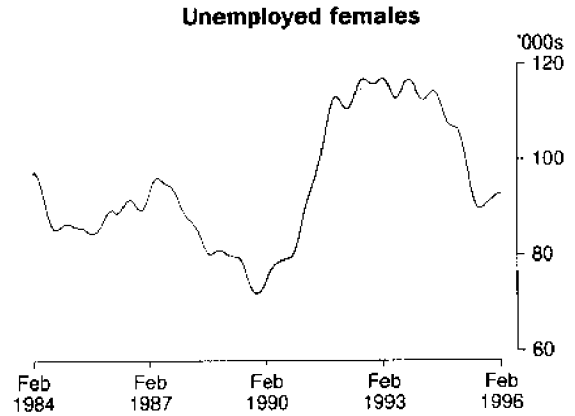
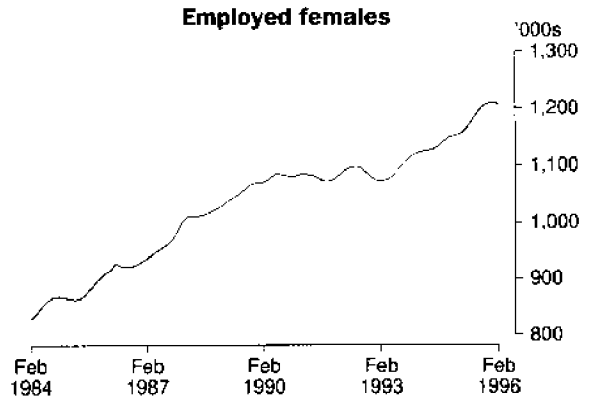
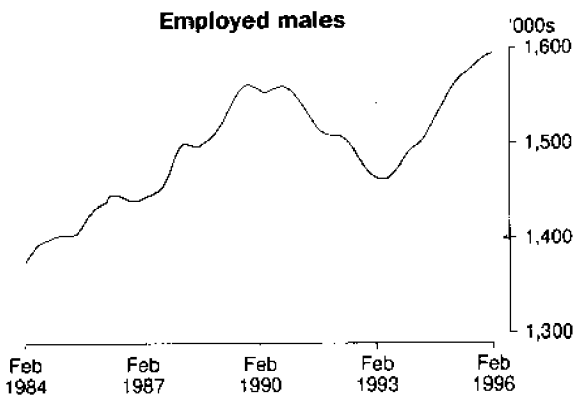
Month	Employed			Unemployed			Labour force ('000)	Not in labour force ('000)	Civilian population aged 15 and over ('000)	Unemployment rate (per cent)	Participation rate (per cent)
	Full-time workers ('000)	Part-time workers ('000)	Total ('000)	Looking for full-time work ('000)	Looking for part-time work ('000)	Total ('000)					
MALES											
February—											
1992	1,367.4	137.1	1,504.5	171.7	15.3	187.0	1,691.5	588.3	2,279.8	11.1	74.2
1993	1,328.7	121.7	1,450.5	206.7	16.2	222.9	1,673.4	627.0	2,300.4	13.3	72.7
1994	1,344.2	148.4	1,492.6	179.8	16.9	196.7	1,689.4	631.8	2,321.1	11.6	72.8
1994—											
December	1,395.8	162.9	1,558.7	140.0	17.8	157.8	1,716.5	624.5	2,341.0	9.2	73.3
1995—											
January	1,384.8	159.2	1,544.0	147.4	18.8	166.2	1,710.2	633.6	2,343.8	9.7	73.0
February	1,408.7	155.7	1,564.4	137.8	19.8	157.6	1,722.0	624.5	2,346.5	9.2	73.4
November	1,408.5	182.9	1,591.4	121.2	13.4	134.5	1,725.9	642.7	2,368.7	7.8	72.9
December	1,440.0	167.7	1,607.7	120.9	15.4	136.3	1,744.0	627.2	2,371.1	7.8	73.6
1996—											
January	1,431.1	142.9	1,574.0	137.0	20.8	157.9	1,731.8	642.3	2,374.1	9.1	72.9
February	1,421.5	167.0	1,588.4	133.6	17.0	150.5	1,739.0	638.1	2,377.1	8.7	73.2
MARRIED FEMALES											
February—											
1992	366.5	280.3	646.8	35.0	16.3	51.3	698.1	667.7	1,365.8	7.4	51.1
1993	366.9	273.1	640.0	38.2	17.8	56.0	696.0	652.0	1,348.0	8.0	51.6
1994	391.7	283.9	675.7	38.8	16.1	55.0	730.6	650.4	1,381.0	7.5	52.9
1994—											
December	387.6	296.8	684.4	22.1	16.7	38.7	723.2	655.0	1,378.2	5.4	52.5
1995—											
January	379.7	283.3	663.0	24.3	13.1	37.5	700.5	692.2	1,392.7	5.3	50.3
February	383.3	298.3	681.7	30.3	20.2	50.5	732.1	662.6	1,394.7	6.9	52.5
November	420.5	313.8	734.3	26.8	16.0	42.8	777.1	628.8	1,405.9	5.5	55.3
December	416.4	308.0	724.4	23.1	8.7	31.8	756.2	642.8	1,399.0	4.2	54.1
1996—											
January	397.9	285.8	683.7	22.8	11.3	34.1	717.7	683.7	1,401.4	4.7	51.2
February	399.6	304.5	704.1	31.8	12.8	44.6	748.7	664.8	1,413.5	6.0	53.0
ALL FEMALES											
February—											
1992	676.7	396.8	1,073.5	91.0	34.9	125.8	1,199.3	1,159.8	2,359.0	10.5	50.8
1993	670.7	398.5	1,069.2	100.5	35.0	135.5	1,204.7	1,176.7	2,381.4	11.2	50.6
1994	687.5	420.4	1,107.9	95.3	34.4	129.8	1,237.7	1,166.8	2,404.5	10.5	51.5
1994—											
December	712.6	455.2	1,167.7	73.6	37.5	111.1	1,278.8	1,147.5	2,426.3	8.7	52.7
1995—											
January	692.7	433.5	1,126.2	74.8	33.3	108.1	1,234.3	1,194.3	2,428.6	8.8	50.8
February	690.3	445.1	1,135.4	89.3	42.7	132.0	1,267.4	1,163.4	2,430.9	10.4	52.1
November	735.0	485.2	1,220.3	65.0	29.0	94.0	1,314.3	1,137.6	2,451.9	7.2	53.6
December	744.6	479.7	1,224.3	65.3	23.9	89.2	1,313.5	1,140.9	2,454.4	6.8	53.5
1996—											
January	730.8	442.1	1,173.0	69.7	27.1	96.8	1,269.8	1,187.8	2,457.5	7.6	51.7
February	717.9	465.2	1,183.2	77.2	32.6	109.8	1,293.0	1,167.7	2,460.7	8.5	52.5
PERSONS											
February—											
1992	2,044.1	533.8	2,578.0	262.7	50.1	312.8	2,890.8	1,748.1	4,638.9	10.8	62.3
1993	1,999.5	520.3	2,519.7	307.2	51.3	358.4	2,878.2	1,803.7	4,681.9	12.5	61.5
1994	2,031.7	568.8	2,600.5	275.1	51.4	326.5	2,927.0	1,798.6	4,725.6	11.2	61.9
1994—											
December	2,108.4	618.1	2,726.4	213.6	55.3	268.9	2,995.3	1,772.1	4,767.4	9.0	62.8
1995—											
January	2,077.5	592.8	2,670.2	222.2	52.0	274.2	2,944.4	1,827.9	4,772.4	9.3	61.7
February	2,099.1	600.7	2,699.8	227.2	62.5	289.7	2,989.4	1,787.9	4,777.4	9.7	62.6
November	2,143.5	668.1	2,811.6	186.2	42.4	228.6	3,040.2	1,780.4	4,820.6	7.5	63.1
December	2,184.7	647.4	2,832.0	186.2	39.3	225.5	3,057.5	1,768.0	4,825.5	7.4	63.4
1996—											
January	2,161.9	585.0	2,746.9	206.7	47.9	254.7	3,001.6	1,830.1	4,831.6	8.5	62.1
February	2,139.4	632.2	2,771.6	210.8	49.6	260.4	3,032.0	1,805.8	4,837.7	8.6	62.7

TABLE 2. LABOUR FORCE STATUS: SEASONALLY ADJUSTED AND TREND SERIES, NSW

Month	Seasonally adjusted series					Trend series (a)				
	Employed ('000)	Unemp-loyed ('000)	Labour force ('000)	Unemp-loyment rate (per cent)	Partici-pation rate (per cent)	Employed ('000)	Unemp-loyed ('000)	Labour force ('000)	Unemp-loyment rate (per cent)	Partici-pation rate (per cent)
MALES										
February—										
1992	1,510.8	171.9	1,682.7	10.2	73.8	1,509.3	170.3	1,679.6	10.1	73.7
1993	1,455.9	205.6	1,661.5	12.4	72.2	1,465.1	197.4	1,662.5	11.9	72.3
1994	1,497.2	181.9	1,679.1	10.8	72.3	1,496.7	184.6	1,681.3	11.0	72.4
1994—										
December	1,546.7	149.7	1,696.4	8.8	72.5	1,549.7	150.4	1,700.1	8.8	72.6
1995—										
January	1,561.1	152.5	1,713.6	8.9	73.1	1,556.0	148.5	1,704.6	8.7	72.7
February	1,569.0	145.8	1,714.8	8.5	73.1	1,561.9	146.2	1,708.1	8.6	72.8
March	1,560.9	144.3	1,705.2	8.5	72.6	1,566.5	143.7	1,710.2	8.4	72.8
April	1,570.2	138.5	1,708.7	8.1	72.7	1,570.0	141.2	1,711.2	8.3	72.8
May	1,571.6	141.2	1,712.8	8.2	72.7	1,572.6	139.3	1,711.9	8.1	72.7
June	1,577.0	136.8	1,713.9	8.0	72.7	1,574.8	138.7	1,713.4	8.1	72.7
July	1,575.1	137.9	1,713.1	8.1	72.6	1,577.4	138.9	1,716.3	8.1	72.7
August	1,580.1	138.8	1,718.9	8.1	72.8	1,580.5	139.4	1,719.9	8.1	72.8
September	1,587.7	142.6	1,730.3	8.2	73.2	1,583.6	139.7	1,723.3	8.1	72.9
October	1,578.5	140.8	1,719.3	8.2	72.7	1,586.5	139.7	1,726.3	8.1	73.0
November	1,594.0	142.8	1,736.8	8.2	73.3	1,589.2	139.6	1,728.8	8.1	73.0
December	1,595.2	129.1	1,724.4	7.5	72.7	1,591.5	139.3	1,730.8	8.0	73.0
1996—										
January	1,591.2	144.7	1,735.9	8.3	73.1	1,593.3	139.1	1,732.4	8.0	73.0
February	1,592.9	139.3	1,732.2	8.0	72.9	1,594.3	139.0	1,733.3	8.0	72.9
FEMALES										
February—										
1992	1,085.9	111.3	1,197.2	9.3	50.7	1,086.1	111.2	1,197.3	9.3	50.8
1993	1,082.1	118.6	1,200.7	9.9	50.4	1,072.1	117.1	1,189.1	9.8	49.9
1994	1,121.7	112.8	1,234.5	9.1	51.3	1,122.9	112.7	1,235.6	9.1	51.4
1994—										
December	1,155.2	110.8	1,266.0	8.7	52.2	1,151.1	106.8	1,257.9	8.5	51.8
1995—										
January	1,159.4	101.6	1,260.9	8.1	51.9	1,152.4	106.4	1,258.8	8.5	51.8
February	1,149.8	114.5	1,264.2	9.1	52.0	1,154.3	104.6	1,258.9	8.3	51.8
March	1,150.3	101.4	1,251.7	8.1	51.4	1,157.7	101.6	1,259.3	8.1	51.8
April	1,165.3	93.9	1,259.2	7.5	51.7	1,163.0	97.9	1,260.9	7.8	51.8
May	1,163.9	94.7	1,258.5	7.5	51.6	1,169.6	94.1	1,263.7	7.4	51.8
June	1,189.9	89.2	1,279.2	7.0	52.4	1,177.6	91.3	1,268.9	7.2	52.0
July	1,182.5	86.8	1,269.3	6.8	52.0	1,186.4	89.9	1,276.2	7.0	52.3
August	1,189.6	97.2	1,286.8	7.6	52.6	1,194.8	89.7	1,284.5	7.0	52.5
September	1,200.3	85.5	1,285.8	6.7	52.5	1,201.5	90.3	1,291.9	7.0	52.8
October	1,211.7	88.6	1,300.3	6.8	53.1	1,206.2	91.0	1,292.2	7.0	53.0
November	1,214.1	98.4	1,312.5	7.5	53.5	1,208.7	91.6	1,300.3	7.0	53.0
December	1,212.0	89.2	1,301.2	6.9	53.0	1,209.6	92.2	1,301.7	7.1	53.0
1996—										
January	1,207.1	90.9	1,298.0	7.0	52.8	1,209.2	92.7	1,301.9	7.1	53.0
February	1,198.3	95.1	1,293.3	7.4	52.6	1,207.5	92.8	1,300.3	7.1	52.8
PERSONS										
February—										
1992	2,596.7	283.2	2,879.9	9.8	62.1	2,595.4	281.5	2,876.9	9.8	62.0
1993	2,538.0	324.2	2,862.2	11.3	61.1	2,537.2	314.4	2,851.6	11.0	60.9
1994	2,618.9	294.7	2,913.7	10.1	61.7	2,619.6	297.3	2,916.9	10.2	61.7
1994—										
December	2,701.9	260.5	2,962.4	8.8	62.1	2,700.8	257.2	2,958.0	8.7	62.0
1995—										
January	2,720.5	254.1	2,974.5	8.5	62.3	2,708.5	254.9	2,963.4	8.6	62.1
February	2,718.7	260.3	2,979.0	8.7	62.4	2,716.2	250.9	2,967.1	8.5	62.1
March	2,711.3	245.7	2,957.0	8.3	61.8	2,724.2	245.3	2,969.5	8.3	62.1
April	2,735.5	232.3	2,967.9	7.8	62.0	2,733.0	239.1	2,972.2	8.0	62.1
May	2,735.5	235.8	2,971.3	7.9	62.0	2,742.1	233.4	2,975.6	7.8	62.1
June	2,767.0	226.1	2,993.0	7.6	62.4	2,752.4	229.9	2,982.3	7.7	62.2
July	2,757.7	224.7	2,982.4	7.5	62.1	2,763.8	228.8	2,992.5	7.6	62.3
August	2,769.7	236.0	3,005.7	7.9	62.5	2,775.4	229.1	3,004.4	7.6	62.5
September	2,788.0	228.1	3,016.1	7.6	62.7	2,785.2	230.1	3,015.2	7.6	62.7
October	2,790.2	229.5	3,019.6	7.6	62.7	2,792.7	230.7	3,023.4	7.6	62.8
November	2,808.1	241.2	3,049.2	7.9	63.3	2,797.9	231.2	3,029.1	7.6	62.8
December	2,807.3	218.3	3,025.6	7.2	62.7	2,801.0	231.4	3,032.5	7.6	62.8
1996—										
January	2,798.3	235.7	3,033.9	7.8	62.8	2,802.5	231.8	3,034.3	7.6	62.8
February	2,791.2	234.4	3,025.6	7.7	62.5	2,801.8	231.9	3,033.7	7.6	62.7

(a) See Explanatory Note 28.

TREND SERIES, NSW (a)



(a) Comparisons between these graphs should not be made, as their vertical axes are not similarly scaled.

TABLE 3. LABOUR FORCE STATUS: AGE, NSW, FEBRUARY 1996

Age group (years)	Employed			Unemployed			Labour force ('000)	Not in labour force ('000)	Civilian population aged 15 and over ('000)	Unemployment rate (per cent)	Participation rate (per cent)
	Full-time workers ('000)	Part-time workers ('000)	Total ('000)	Looking for full-time work ('000)	Looking for part-time work ('000)	Total ('000)					
MALES											
15-19	52.6	48.4	101.0	16.7	9.5	26.2	127.2	87.7	214.9	20.6	59.2
20-24	154.5	25.4	179.9	25.0	* 2.3	27.3	207.2	28.9	236.1	13.2	87.8
25-34	378.6	26.2	404.8	34.1	* 1.0	35.1	439.9	33.2	473.1	8.0	93.0
35-44	378.7	24.9	403.6	24.2	* 1.8	26.0	429.6	32.1	461.7	6.1	93.0
45-54	306.8	18.3	325.0	20.0	* 1.0	21.0	346.0	46.2	392.2	6.1	88.2
55-59	83.6	8.2	91.8	8.1	* 0.3	8.4	100.3	44.1	144.4	8.4	69.4
60-64	44.9	6.9	51.8	* 4.8	* 0.6	5.4	57.2	63.9	121.1	9.4	47.2
65 and over	21.7	8.7	30.5	* 0.6	* 0.6	* 1.1	31.6	301.9	333.6	* 3.6	9.5
Total	1,421.5	167.0	1,588.4	133.6	17.0	150.5	1,739.0	638.1	2,377.1	8.7	73.2
MARRIED FEMALES											
15-19	* 1.5	* 0.7	* 2.2	* 0.7	* 0.0	* 0.7	* 2.9	* 2.5	5.4	* 25.6	* 53.6
20-24	19.5	11.4	30.9	7.0	* 0.7	7.8	38.6	19.2	57.8	20.1	66.8
25-34	117.2	78.0	195.2	8.4	* 4.6	13.0	208.2	117.7	325.9	6.2	63.9
35-44	128.3	111.6	239.9	8.9	5.5	14.5	254.3	106.0	360.3	5.7	70.6
45-54	104.7	74.2	179.0	5.6	* 1.9	7.5	186.4	105.9	292.3	4.0	63.8
55-59	19.6	18.1	37.7	* 1.2	* 0.0	* 1.2	38.9	67.0	105.9	* 3.2	36.8
60-64	6.7	7.4	14.1	* 0.0	* 0.0	* 0.0	14.1	71.4	85.5	* 0.0	16.5
65 and over	* 2.0	* 3.1	* 5.1	* 0.0	* 0.0	* 0.0	* 5.1	175.2	180.3	* 0.0	* 2.9
Total	399.6	304.5	704.1	31.8	12.8	44.6	748.7	664.8	1,413.5	6.0	53.0
ALL FEMALES											
15-19	33.0	61.8	94.8	13.6	11.3	24.9	119.7	84.7	204.4	20.8	58.6
20-24	114.7	45.2	159.9	19.5	* 2.4	21.9	181.8	49.3	231.1	12.1	78.7
25-34	203.5	102.5	306.0	17.6	6.9	24.5	330.5	147.9	478.4	7.4	69.1
35-44	181.4	129.6	311.0	14.1	7.1	21.2	332.2	132.4	464.6	6.4	71.5
45-54	141.5	88.7	230.2	10.1	* 3.1	13.2	243.4	136.3	379.8	5.4	64.1
55-59	28.4	22.1	50.5	* 2.2	* 1.6	* 3.8	54.3	85.8	140.1	* 6.9	38.8
60-64	11.8	9.8	21.5	* 0.0	* 0.3	* 0.3	21.9	101.0	122.8	* 1.4	17.8
65 and over	* 3.7	5.5	9.2	* 0.0	* 0.0	* 0.0	9.2	430.2	439.4	* 0.0	2.1
Total	717.9	465.2	1,183.2	77.2	32.6	109.8	1,293.0	1,167.7	2,460.7	8.5	52.5
PERSONS											
15-19	85.6	110.2	195.9	30.3	20.8	51.1	247.0	172.3	419.3	20.7	58.9
20-24	269.2	70.5	339.7	44.5	* 4.7	49.2	389.0	78.2	467.2	12.7	83.3
25-34	582.1	128.7	710.8	51.7	7.8	59.6	770.4	181.1	951.5	7.7	81.0
35-44	560.1	154.5	714.6	38.3	8.9	47.2	761.8	164.5	926.3	6.2	82.2
45-54	448.2	107.0	555.2	30.2	* 4.1	34.2	589.5	182.5	772.0	5.8	76.4
55-59	112.0	30.3	142.4	10.3	* 1.9	12.2	154.6	130.0	284.5	7.9	54.3
60-64	56.6	16.7	73.4	* 4.8	* 0.9	5.7	79.0	164.8	243.9	7.2	32.4
65 and over	25.4	14.2	39.6	* 0.6	* 0.6	* 1.1	40.8	732.2	773.0	* 2.8	5.3
Total	2,139.4	632.2	2,771.6	210.8	49.6	260.4	3,032.0	1,805.8	4,837.7	8.6	62.7

PERSONS AGED 15-19 IN THE LABOUR FORCE, NSW:
FULL-TIME ATTENDANCE AT SCHOOL OR A TERTIARY EDUCATIONAL INSTITUTION

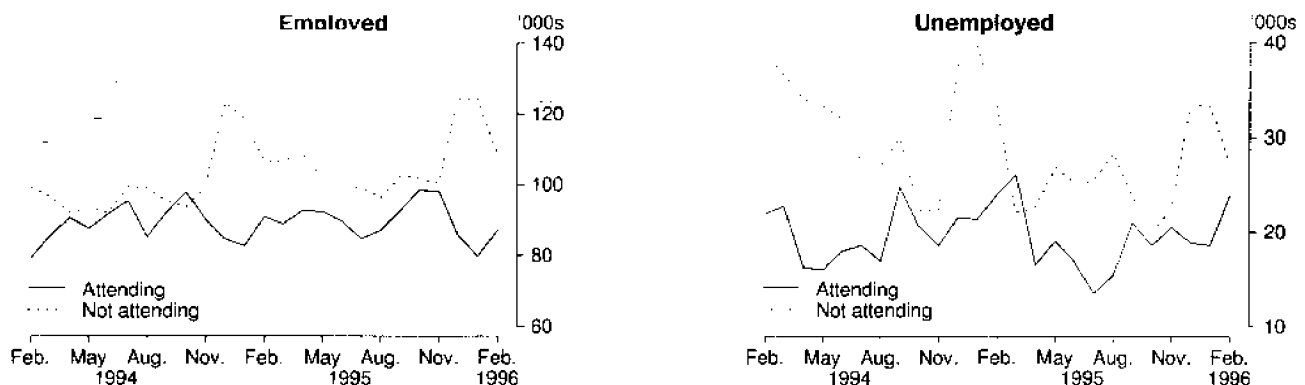


TABLE 4. LABOUR FORCE STATUS: PERSONS AGED 15-24 BY FULL-TIME EDUCATIONAL ATTENDANCE, NSW, FEBRUARY 1996

Age (years)	Employed			Unemployed			Labour force ('000)	Not in labour force ('000)	Civilian population aged 15 and over ('000)	Unemployment rate (per cent)	Participation rate (per cent)
	Full-time workers ('000)	Part-time workers ('000)	Total ('000)	Looking for full-time work ('000)	Looking for part-time work ('000)	Total ('000)					
ATTENDING SCHOOL OR A TERTIARY EDUCATIONAL INSTITUTION FULL-TIME											
15-19	5.3	82.1	87.4	* 5.0	18.9	23.9	111.3	149.3	260.6	21.5	42.7
15	* 0.0	18.3	18.3	* 0.6	8.5	9.2	27.4	54.8	82.2	33.4	33.4
16	* 0.6	26.8	27.4	* 1.6	* 3.0	* 4.6	32.0	35.9	67.8	* 14.3	47.1
17	* 0.6	15.6	16.1	* 1.3	* 2.0	* 3.2	19.4	34.5	53.9	* 16.7	36.0
18	* 1.9	10.9	12.8	* 1.0	* 2.6	* 3.6	16.4	15.1	31.5	* 21.9	52.2
19	* 2.3	10.5	12.8	* 0.4	* 2.9	* 3.3	16.1	9.1	25.2	* 20.6	63.9
20-24	8.8	22.4	31.2	* 4.0	* 2.2	6.2	37.4	27.5	64.8	16.5	57.6
20	* 3.8	8.9	12.7	* 0.4	* 0.6	* 1.0	13.7	7.3	21.0	* 7.5	65.4
21	* 2.1	7.1	9.1	* 1.3	* 1.3	* 2.5	11.6	6.5	18.1	* 21.7	64.3
22	* 1.6	* 2.6	* 4.2	* 0.8	* 0.3	* 1.2	5.4	8.6	13.9	* 22.2	38.4
23	* 1.4	* 2.4	* 3.8	* 0.7	* 0.0	* 0.7	* 4.5	* 3.4	7.9	* 15.6	* 57.5
24	* 0.0	* 1.4	* 1.4	* 0.7	* 0.0	* 0.7	* 2.1	* 1.8	* 3.9	* 33.7	* 54.4
Total aged 15-24	14.2	104.4	118.6	9.0	21.1	30.1	148.7	176.8	325.5	20.2	45.7
NOT ATTENDING SCHOOL OR A TERTIARY EDUCATIONAL INSTITUTION FULL-TIME (a)											
15-19	80.3	28.1	108.4	25.3	* 1.9	27.2	135.7	23.0	158.7	30.1	85.5
15	* 0.9	* 0.3	* 1.2	* 0.3	* 0.3	* 0.6	* 1.9	* 0.7	* 2.6	* 34.0	* 72.1
16	6.0	* 3.5	9.5	* 1.8	* 0.6	* 2.4	11.9	* 3.5	15.4	* 20.3	77.3
17	16.1	5.8	21.9	* 4.0	* 0.3	* 4.4	26.2	* 3.3	29.5	* 16.6	88.7
18	23.4	8.9	32.3	12.6	* 0.3	13.0	45.3	6.7	52.0	28.6	87.1
19	33.8	9.7	43.5	6.5	* 0.4	6.9	50.4	8.8	59.1	13.6	85.2
20-24	260.4	48.2	308.5	40.6	* 2.5	43.1	351.6	50.8	402.4	12.2	87.4
20	40.9	9.5	50.3	6.9	* 0.8	7.7	58.0	7.5	65.5	13.3	88.6
21	41.6	8.5	50.1	11.0	* 0.6	11.6	61.7	10.3	72.0	18.8	85.7
22	52.8	11.2	63.9	5.5	* 0.3	5.9	69.8	9.3	79.1	8.4	88.2
23	58.9	7.4	66.3	10.9	* 0.3	11.2	77.5	11.4	88.9	14.5	87.1
24	66.3	11.7	77.9	6.2	* 0.4	6.6	84.6	12.3	96.8	7.9	87.3
Total aged 15-24	340.7	76.3	417.0	65.9	* 4.4	70.3	487.2	73.8	561.1	14.4	86.8
TOTAL											
15-19	85.6	110.2	195.9	30.3	20.8	51.1	247.0	172.3	419.3	20.7	58.9
15	* 0.9	18.6	19.5	* 0.9	8.9	9.8	29.3	55.5	84.8	33.4	34.6
16	6.7	30.2	36.9	* 3.4	* 3.6	7.0	43.9	39.4	83.3	15.9	52.7
17	16.7	21.3	38.0	5.3	* 2.3	7.6	45.6	37.8	83.4	16.7	54.7
18	25.3	19.9	45.1	13.7	* 2.9	16.6	61.7	21.8	83.5	26.8	73.9
19	36.1	20.2	56.3	6.9	* 3.2	10.2	66.5	17.9	84.3	15.3	78.8
20-24	269.2	70.5	339.7	44.5	* 4.7	49.2	389.0	78.2	467.2	12.7	83.3
20	44.7	18.4	63.0	7.3	* 1.4	8.7	71.7	14.7	86.5	12.2	83.0
21	43.6	15.6	59.2	12.3	* 1.9	14.2	73.4	16.7	90.1	19.3	81.4
22	54.3	13.7	68.1	6.4	* 0.7	7.1	75.1	17.9	93.0	9.4	80.8
23	60.3	9.8	70.1	11.6	* 0.3	11.9	82.0	14.8	96.8	14.5	84.7
24	66.3	13.1	79.3	7.0	* 0.4	7.4	86.7	14.1	100.7	8.5	86.0
Total aged 15-24	354.9	180.7	535.6	74.8	25.5	100.3	635.9	250.6	886.5	15.8	71.7

(a) Includes institutionalised persons.

TABLE 5. LABOUR FORCE STATUS: FAMILY STATUS, NSW, FEBRUARY 1996

Family status	Employed			Unemployed			Labour force ('000)	Not in labour force ('000)	Civilian population aged 15 and over ('000)	Unemployment rate (per cent)	Participation rate (per cent)
	Full-time workers ('000)	Part-time workers ('000)	Total ('000)	Looking for full-time work ('000)	Looking for part-time work ('000)	Total ('000)					
<i>Member of a family</i>	1,751.3	555.1	2,306.3	163.9	40.4	204.3	2,510.7	1,356.3	3,866.9	8.1	64.9
Husband	927.8	60.0	987.8	55.4	* 3.3	58.7	1,046.5	341.3	1,387.9	5.6	75.4
With children aged 0-14 present	504.0	27.2	531.2	31.0	* 1.9	32.9	564.1	32.3	596.5	5.8	94.6
Without children aged 0-14 present	423.8	32.8	456.6	24.4	* 1.4	25.8	482.4	309.0	791.4	5.4	61.0
With dependants present	563.3	30.4	593.7	36.3	* 2.2	38.5	632.1	45.5	677.6	6.1	93.3
Without dependants present	364.5	29.6	394.1	19.1	* 1.1	20.3	414.4	295.8	710.2	4.9	58.3
Wife	388.7	299.1	687.8	30.0	11.8	41.7	729.5	642.3	1,371.8	5.7	53.2
With children aged 0-14 present	148.4	183.7	332.1	14.4	8.3	22.7	354.9	228.9	583.8	6.4	60.8
Without children aged 0-14 present	240.3	115.3	355.6	15.6	* 3.4	19.0	374.7	413.3	788.0	5.1	47.5
With dependants present	180.2	201.9	382.1	16.2	9.6	25.8	407.9	254.2	662.1	6.3	61.6
Without dependants present	208.5	97.2	305.7	13.8	* 2.1	15.9	321.6	388.1	709.7	5.0	45.3
Not-married male family head	22.4	* 2.2	24.7	* 2.6	* 0.3	* 3.0	27.6	15.5	43.1	* 10.7	64.1
With children aged 0-14 present	5.7	* 0.6	6.3	* 1.0	* 0.3	* 1.3	7.6	* 4.2	11.8	* 16.8	64.1
Without children aged 0-14 present	16.7	* 1.6	18.4	* 1.7	* 0.0	* 1.7	20.0	11.2	31.3	* 8.4	64.1
With dependants present	10.2	* 0.9	11.2	* 1.6	* 0.3	* 1.9	13.1	5.6	18.7	* 14.8	70.2
Without dependants present	12.2	* 1.3	13.5	* 1.0	* 0.0	* 1.0	14.5	9.9	24.4	* 7.0	59.4
Not-married female family head	54.5	36.8	91.4	8.2	* 4.8	13.0	104.4	107.2	211.6	12.4	49.3
With children aged 0-14 present	26.2	23.9	50.2	* 3.6	* 3.8	7.4	57.6	52.1	109.7	12.9	52.5
Without children aged 0-14 present	28.3	12.9	41.2	* 4.6	* 0.9	5.5	46.8	55.1	101.8	11.9	45.9
With dependants present	34.6	28.5	63.1	* 4.2	* 4.8	8.9	72.0	59.2	131.2	12.4	54.9
Without dependants present	20.0	8.4	28.3	* 4.0	* 0.0	* 4.0	32.4	48.0	80.4	* 12.5	40.3
Full-time student aged 15-24 (a)	10.6	94.3	105.0	7.2	17.5	24.7	129.6	155.1	284.7	19.0	45.5
Other child of family head	319.1	57.2	376.2	53.9	* 2.2	56.1	432.3	51.4	483.7	13.0	89.4
Other relative of family head	28.1	5.5	33.5	6.5	* 0.6	7.2	40.7	43.5	84.2	17.6	48.3
<i>Not a member of a family</i>	331.6	57.8	389.4	34.7	5.8	40.4	429.9	311.3	741.2	9.4	58.0
Living alone	158.3	26.8	185.1	16.0	* 2.9	18.9	204.1	268.0	472.1	9.3	43.2
Not living alone	173.3	31.0	204.3	18.7	* 2.9	21.5	225.8	43.3	269.1	9.5	83.9
<i>Not family coded</i>	56.5	19.3	75.9	12.2	* 3.4	15.6	91.5	138.2	229.6	17.1	39.8
Total	2,139.4	632.2	2,771.6	210.8	49.6	260.4	3,032.0	1,805.8	4,837.7	8.6	62.7

(a) Excludes persons aged 20-24 attending school.

TABLE 6. EMPLOYED PERSONS: STATUS IN EMPLOYMENT (a), NSW ('000)

Status in employment	Males		Females			Persons			
	February 1995	November 1995	February 1996	February 1995	November 1995	February 1996	February 1995	November 1995	February 1996
Employees	1,328.1	1,310.7	1,305.9	999.4	1,082.8	1,051.1	2,327.6	2,393.5	2,356.9
Employers	69.6	75.6	83.0	37.3	35.9	34.9	106.9	111.5	118.0
Own account workers	156.5	193.6	189.1	82.9	87.6	83.2	239.3	281.2	272.3
Total employed (b)	1,564.4	1,591.4	1,588.4	1,135.4	1,220.3	1,183.2	2,699.8	2,811.6	2,771.6

(a) Status in Employment replaces the previous term Status of Worker. No definitional changes have been made — the only changes are to the classification titles. (b) Includes contributing family workers.

**TABLE 7. EMPLOYED PERSONS: AGE, NSW
('000)**

Month	Age group (years)								Total employed
	15-19	20-24	25-34	35-44	45-54	55-59	60-64	65 and over	
MALES									
1995— February	104.2	183.7	386.6	387.4	322.9	94.6	54.2	30.6	1,564.4
1995— November	96.3	183.0	406.4	403.6	325.2	97.4	50.4	29.2	1,591.4
December	105.4	184.4	409.4	403.7	326.3	94.5	53.6	30.2	1,607.7
1996— January	102.1	174.8	403.8	397.3	322.2	89.4	53.2	31.2	1,574.0
February	101.0	179.9	404.8	403.6	325.0	91.8	51.8	30.5	1,588.4
MARRIED FEMALES									
1995— February	* 2.5	36.9	188.2	224.3	174.8	33.1	15.5	6.5	681.7
1995— November	* 2.1	37.9	202.9	244.4	187.8	38.9	14.5	5.7	734.3
December	* 2.7	34.0	196.5	247.7	182.6	39.9	14.7	6.3	724.4
1996— January	* 1.0	32.8	188.2	227.9	176.4	37.8	13.7	5.8	683.7
February	* 2.2	30.9	195.2	239.9	179.0	37.7	14.1	* 5.1	704.1
ALL FEMALES									
1995— February	93.4	165.6	298.1	287.8	216.3	43.7	20.3	10.3	1,135.4
1995— November	102.3	162.3	316.5	311.9	241.4	52.2	22.7	10.9	1,220.3
December	104.6	164.4	309.9	317.1	238.6	52.9	24.1	12.6	1,224.3
1996— January	102.0	161.0	299.0	299.1	228.7	50.7	22.1	10.5	1,173.0
February	94.8	159.9	306.0	311.0	230.2	50.5	21.5	9.2	1,183.2
PERSONS									
1995— February	197.6	349.3	684.8	675.1	539.2	138.3	74.6	40.9	2,699.8
1995— November	198.6	345.3	723.0	715.5	566.6	149.6	73.0	40.1	2,811.6
December	210.0	348.8	719.3	720.9	564.9	147.4	77.7	42.9	2,832.0
1996— January	204.1	335.8	702.8	696.4	550.8	140.1	75.3	41.6	2,746.9
February	195.9	339.7	710.8	714.6	555.2	142.4	73.4	39.6	2,771.6

ANNUAL CHANGE IN EMPLOYMENT BY AGE, NSW, FEBRUARY 1995 TO FEBRUARY 1996

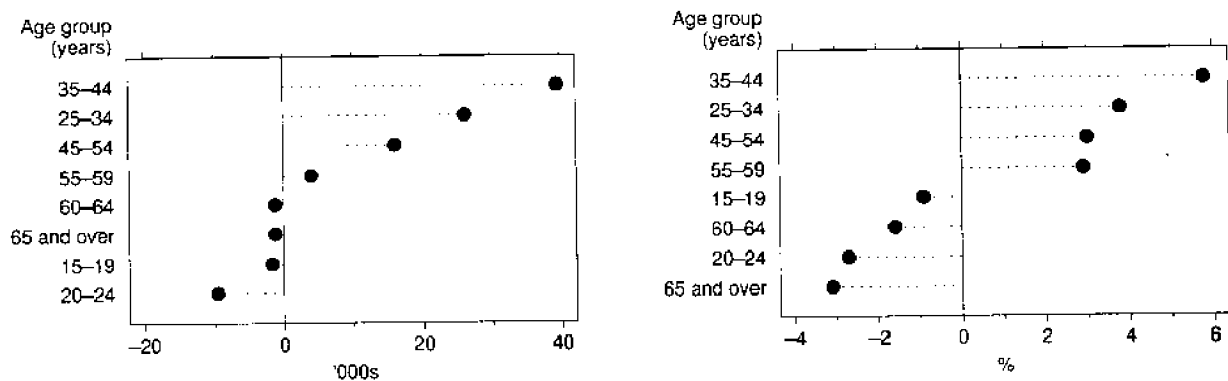


TABLE 8. EMPLOYED PERSONS: INDUSTRY (a), NSW, FEBRUARY 1996
(*000)

Industry division and subdivision	Males	Females	Persons
<i>Agriculture, forestry and fishing</i>	89.0	38.6	127.7
Agriculture	75.3	36.4	111.8
Services to agriculture, hunting and trapping	* 4.4	* 0.3	* 4.7
Forestry and logging	* 3.8	* 0.6	* 4.4
Commercial fishing	5.6	* 1.3	6.9
<i>Mining</i>	26.4	* 0.9	27.4
Coal mining	19.3	* 0.3	19.6
Oil and gas extraction	* 0.6	* 0.0	* 0.6
Metal ore mining	* 1.3	* 0.0	* 1.3
Other mining	* 4.6	* 0.6	* 5.2
Services to mining	* 0.6	* 0.0	* 0.6
<i>Manufacturing</i>	257.5	104.6	362.0
Food, beverage and tobacco manufacturing	42.0	16.6	58.6
Textile, clothing, footwear and leather manufacturing	14.4	21.8	36.3
Wood and paper product manufacturing	17.6	* 4.0	21.6
Printing, publishing and recorded media	25.8	20.0	45.8
Petroleum, coal, chemical and associated product manufacturing	23.1	9.2	32.3
Non-metallic mineral product manufacturing	8.7	* 2.8	11.5
Metal product manufacturing	53.3	9.0	62.3
Machinery and equipment manufacturing	55.5	16.5	72.0
Other manufacturing	17.0	* 4.7	21.7
<i>Electricity, gas and water supply</i>	25.2	6.8	31.9
Electricity and gas supply	19.7	* 3.9	23.6
Water supply, sewerage and drainage services	5.4	* 2.9	8.3
<i>Construction</i>	186.1	24.7	210.8
General construction	69.2	8.9	78.1
Construction trade services	116.9	15.8	132.7
<i>Wholesale trade</i>	121.7	52.5	174.2
Basic material wholesaling	29.8	12.5	42.4
Machinery and motor vehicle wholesaling	49.5	18.7	68.2
Personal and household good wholesaling	42.4	21.3	63.6
<i>Retail trade</i>	203.3	209.4	412.8
Food retailing	61.6	87.6	149.2
Personal and household good retailing	65.7	106.6	172.2
Motor vehicle retailing and services	76.1	15.3	91.4
<i>Accommodation, cafes and restaurants</i>	56.5	73.7	130.3
<i>Transport and storage</i>	101.6	29.9	131.5
Road transport	53.6	11.5	65.1
Rail transport	17.7	* 1.6	19.4
Water transport	* 2.6	* 0.6	* 3.2
Air and Space transport	13.1	6.9	20.1
Other transport	* 0.7	* 0.0	* 0.7
Services to transport	9.9	8.0	17.9
Storage	* 4.0	* 1.2	* 5.2
<i>Communication services</i>	43.8	19.7	63.5
<i>Finance and insurance</i>	58.5	72.8	131.3
Finance	33.5	45.9	79.5
Insurance	11.6	15.6	27.2
Services to finance and insurance	13.4	11.2	24.7
<i>Property and business services</i>	141.2	120.4	261.6
Property services	15.6	13.1	28.7
Business services	125.6	107.3	232.9
<i>Government administration and defence</i>	72.4	40.1	112.5
Government administration	66.4	36.9	103.3
Defence	6.0	* 3.2	9.2
<i>Education</i>	58.8	123.1	181.9
<i>Health and community services</i>	62.4	185.9	248.3
Health services	49.9	148.9	198.7
Community services	12.5	37.0	49.5
<i>Cultural and recreational services</i>	30.3	27.2	57.5
Motion picture, radio and television services	10.5	8.2	18.7
Libraries, museums and the arts	8.6	7.5	16.1
Sport and recreation	11.2	11.5	22.7
<i>Personal and other services</i>	53.6	52.9	106.5
Personal services	19.7	28.3	48.0
Other services	33.4	21.8	55.2
Private households employing staff	* 0.5	* 2.8	* 3.3
Total employed	1,588.4	1,183.2	2,771.6

(a) Industry data are now classified according to the Australian and New Zealand Standard Industrial Classification. See the Explanatory Notes for more details.

EMPLOYMENT BY INDUSTRY SUBDIVISION, NSW, FEBRUARY 1996

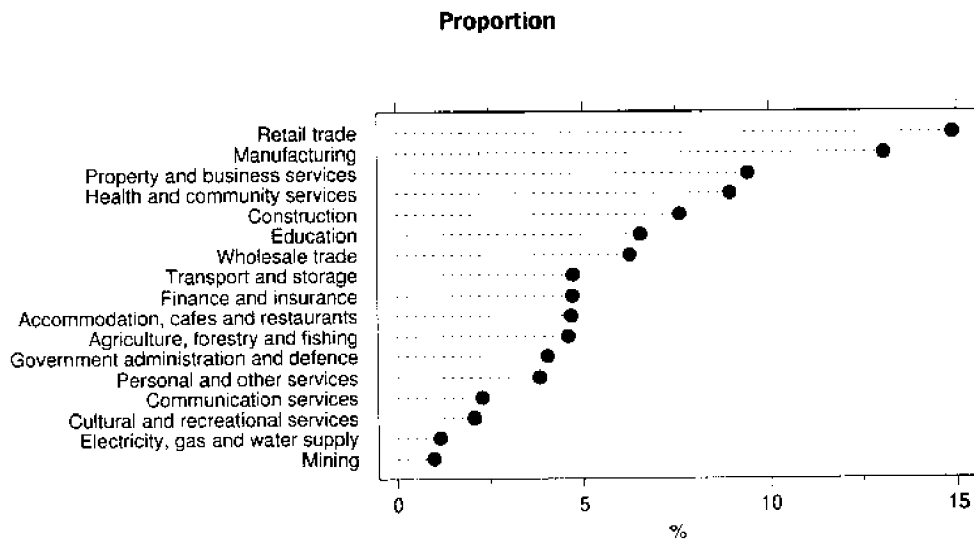
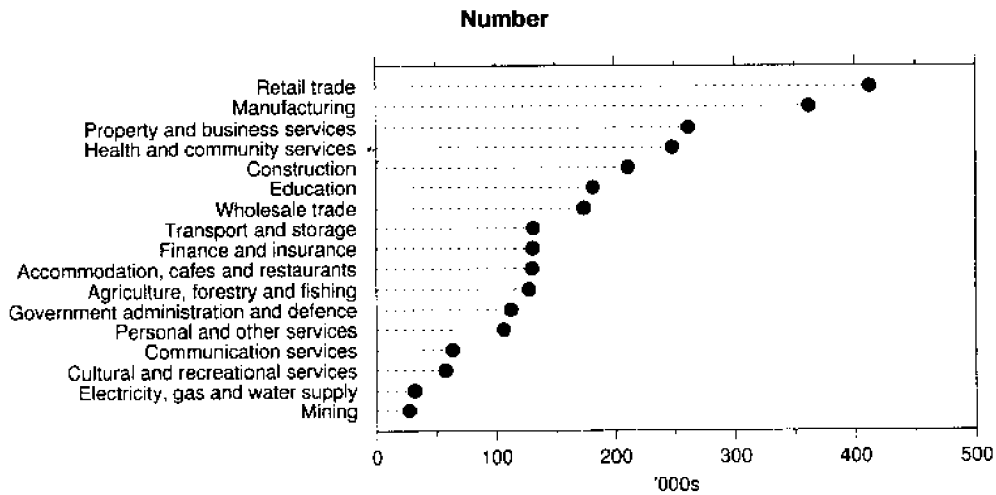
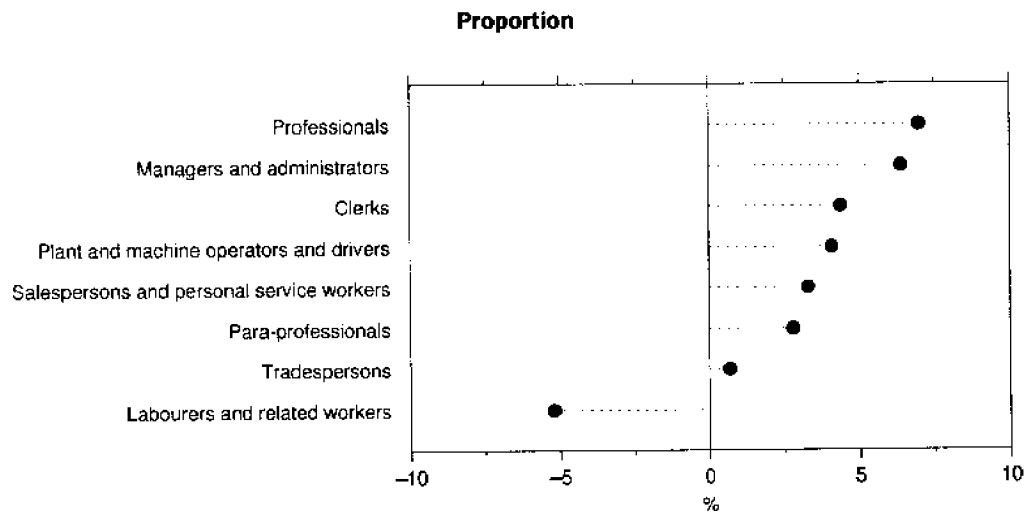
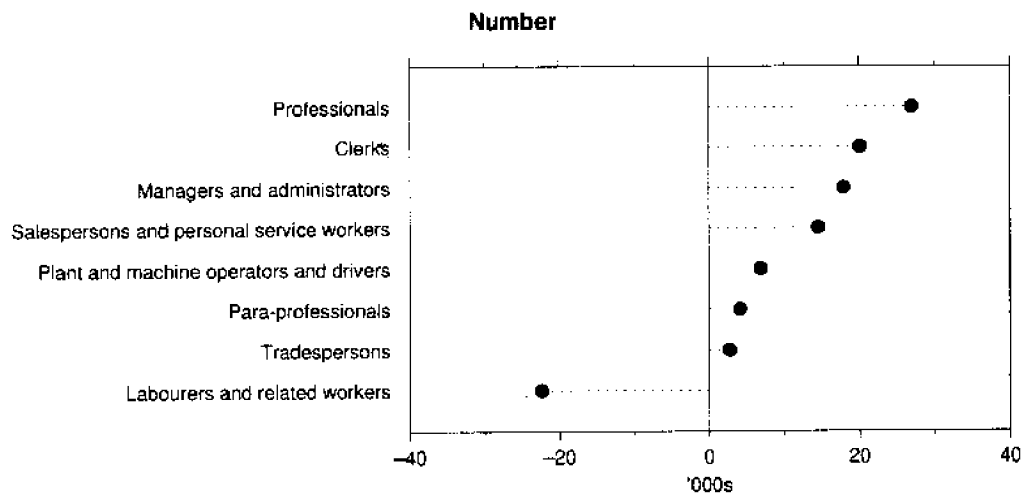


TABLE 9. EMPLOYED PERSONS: OCCUPATION, NSW ('000)

Major and minor occupation group	Males			Females			Persons		
	February 1995	November 1995	February 1996	February 1995	November 1995	February 1996	February 1995	November 1995	February 1996
<i>Managers and administrators</i>	213.1	221.3	225.6	67.3	79.0	72.8	280.4	300.3	298.4
Legislators and government appointed officials	* 0.3	* 0.3	* 0.6	* 0.0	* 0.3	* 0.3	* 0.3	* 0.6	* 0.9
General managers	21.8	21.8	17.9	* 3.9	* 3.7	* 5.1	25.7	25.5	23.0
Specialist managers	51.0	57.4	60.6	16.7	21.0	18.5	67.7	78.4	79.1
Farmers and farm managers	46.4	51.9	51.9	13.7	22.1	19.8	60.0	73.9	71.7
Managing supervisors (sales and service)	64.0	57.2	61.6	30.1	29.1	27.1	94.1	86.3	88.6
Managing supervisors (other business)	29.6	32.8	33.0	* 3.0	* 2.8	* 2.1	32.6	35.6	35.1
<i>Professionals</i>	222.6	234.4	234.2	163.6	187.5	179.1	386.2	421.9	413.3
Natural scientists	9.2	10.3	6.5	* 2.8	* 4.7	6.0	12.0	15.0	12.5
Building professionals and engineers	39.2	41.7	42.7	* 2.1	* 1.0	* 1.5	41.3	42.7	44.1
Health diagnosis and treatment practitioners	20.0	22.3	21.0	21.0	16.4	19.4	41.0	38.7	40.4
School teachers	24.7	24.8	22.4	53.7	67.0	61.4	78.4	91.8	83.8
Other teachers and instructors	15.3	20.6	20.1	15.4	21.9	21.8	30.7	42.5	41.9
Social professionals	16.5	19.2	20.9	7.2	13.7	9.9	23.7	32.9	30.8
Business professionals	69.9	70.7	74.1	35.1	41.3	38.4	105.0	112.0	112.5
Artists and related professionals	18.5	15.6	18.1	15.0	12.1	11.1	33.5	27.7	29.2
Miscellaneous professionals	9.2	9.2	8.5	11.3	9.4	9.6	20.5	18.6	18.1
<i>Para-professionals</i>	75.1	74.2	73.7	74.0	81.8	79.5	149.1	156.0	153.3
Medical and science technical officers and technicians	6.2	* 4.5	* 4.8	* 5.2	5.4	5.9	11.4	9.9	10.7
Engineering and building associates and technicians	23.7	22.9	22.4	* 1.5	* 1.6	* 1.5	25.3	24.5	23.9
Air and sea transport technical workers	* 5.2	* 4.3	* 5.1	* 0.0	* 0.4	* 0.0	* 5.2	* 4.7	* 5.1
Registered nurses	* 3.9	* 3.9	* 4.7	51.0	51.0	50.5	54.9	54.9	55.2
Police	10.9	10.7	10.3	* 1.7	* 2.2	* 2.6	12.6	12.9	12.9
Miscellaneous para-professionals	25.2	28.0	26.4	14.5	21.2	19.0	39.7	49.2	45.4
<i>Tradespersons</i>	347.0	340.7	347.7	38.7	34.9	40.8	385.7	375.6	388.5
Metal fitting and machining tradespersons	34.4	38.6	30.8	* 0.6	* 0.0	* 0.3	35.0	38.6	31.1
Other metal tradespersons	33.0	24.9	25.1	* 0.9	* 0.3	* 0.9	33.9	25.3	26.0
Electrical and electronics tradespersons	69.5	61.5	69.9	* 0.9	* 0.3	* 1.3	70.5	61.8	71.2
Building tradespersons	81.1	86.4	80.1	* 0.3	* 1.3	* 1.0	81.5	87.7	81.0
Printing tradespersons	11.4	10.5	12.6	* 4.8	* 1.3	* 2.0	16.1	11.7	14.7
Vehicle tradespersons	46.0	48.1	50.2	* 0.3	* 0.0	* 0.4	46.3	48.1	50.5
Food tradespersons	29.8	28.4	31.5	8.1	7.9	13.5	37.9	36.3	45.0
Amenity horticultural tradespersons	12.9	16.8	16.7	* 1.7	* 3.1	* 2.3	14.6	19.9	19.0
Miscellaneous tradespersons	28.9	25.4	31.0	21.0	20.7	19.1	49.9	46.1	50.1
<i>Clerks</i>	113.1	105.1	107.6	349.5	378.5	375.2	462.6	483.6	482.8
Stenographers and typists	* 1.6	* 2.2	* 1.3	94.5	84.9	88.9	96.2	87.1	90.2
Data processing and business machine operators	10.5	6.2	12.7	26.6	31.3	32.0	37.1	37.5	44.7
Numerical clerks	37.4	42.8	39.8	120.8	136.7	126.3	158.2	179.5	166.2
Filing, sorting and copying clerks	12.9	13.2	12.3	19.0	26.0	25.2	31.9	39.1	37.5
Material recording and despatching clerks	18.3	13.5	12.5	9.7	12.0	8.1	28.0	25.5	20.5
Receptionists, telephonists and messengers	11.9	14.3	19.3	57.2	60.5	70.3	69.1	74.8	89.6
Miscellaneous clerks	20.5	12.8	9.6	21.7	27.2	24.4	42.2	40.0	34.0
<i>Salespersons and personal service workers</i>	161.4	173.3	170.9	280.4	295.3	285.4	441.8	468.6	456.4
Investment, insurance and real estate salespersons	18.8	20.2	17.2	8.7	6.2	6.1	27.5	26.4	23.3
Sales representatives	34.8	37.3	31.2	14.2	12.5	12.9	48.9	49.8	44.0
Sales assistants	67.4	66.3	70.9	120.4	126.7	132.1	187.8	193.0	203.0
Tellers, cashiers and ticket salespersons	9.6	12.3	14.7	43.9	44.4	44.1	53.5	56.7	58.8
Miscellaneous salespersons	25.2	26.2	26.9	45.3	46.1	45.1	70.5	72.3	72.0
Personal service workers	5.6	11.0	10.1	48.0	59.4	45.1	53.6	70.4	55.2
<i>Plant and machine operators, and drivers</i>	147.6	153.7	155.2	21.2	19.0	20.7	168.9	172.7	175.9
Road and rail transport drivers	88.9	85.0	84.9	* 3.2	5.6	* 4.6	92.2	90.6	89.5
Mobile plant operators (except transport)	28.4	34.1	31.7	* 0.7	* 0.0	* 0.0	29.0	34.1	31.7
Stationary plant operators	12.8	17.0	18.2	* 0.0	* 0.3	* 0.4	12.8	17.3	18.5
Machine operators	17.5	17.6	20.5	17.3	13.1	15.8	34.8	30.8	36.2
<i>Labourers and related workers</i>	284.5	288.7	273.5	140.8	144.2	129.5	423.3	432.9	403.0
Trades assistants and factory hands	73.7	78.1	77.6	34.3	32.3	32.3	108.0	110.4	109.9
Agricultural labourers and related workers	28.9	38.5	34.5	16.1	13.4	11.4	45.0	51.9	45.9
Cleaners	37.1	27.3	25.2	41.5	44.0	36.5	78.6	71.3	61.7
Construction and mining labourers	41.0	48.2	46.1	* 0.3	* 0.0	* 0.6	41.3	48.2	46.7
Miscellaneous labourers and related workers	103.9	96.7	90.1	48.6	54.5	48.7	152.4	151.1	138.8
Total employed	1,564.4	1,591.4	1,588.4	1,135.4	1,220.3	1,183.2	2,699.8	2,811.6	2,771.6

ANNUAL CHANGE IN EMPLOYMENT BY OCCUPATION GROUP, NSW, FEBRUARY 1995 TO FEBRUARY 1996



**TABLE 10. UNEMPLOYED PERSONS: AGE, NSW
(^{'000})**

Month	Age group (years)						Total unemployed
	15-19	20-24	25-34	35-44	45-54	55 and over	
MALES							
1995— February	28.0	27.4	38.6	31.4	17.7	14.6	157.6
1995— November	24.2	22.6	32.1	25.9	17.6	12.1	134.5
December	27.0	24.9	28.7	25.7	17.5	12.6	136.3
1996— January	30.9	31.1	32.0	28.8	19.9	15.2	157.9
February	26.2	27.3	35.1	26.0	21.0	14.9	150.5
FEMALES							
1995— February	29.2	24.7	33.9	22.0	15.7	6.6	132.0
1995— November	18.7	19.4	21.3	22.3	8.9	* 3.5	94.0
December	25.4	18.6	17.9	16.6	8.5	* 2.1	89.2
1996— January	21.0	24.5	21.2	19.0	8.2	* 2.9	96.8
February	24.9	21.9	24.5	21.2	13.2	* 4.1	109.8
PERSONS							
1995— February	57.2	52.1	72.4	53.4	33.4	21.2	289.7
1995— November	42.9	42.0	53.3	48.2	26.5	15.6	228.6
December	52.4	43.5	46.6	42.3	26.0	14.7	225.5
1996— January	51.9	55.6	53.2	47.8	28.0	18.2	254.7
February	51.1	49.2	59.6	47.2	34.2	19.0	260.4

**TABLE 11. UNEMPLOYED PERSONS: UNEMPLOYMENT RATE BY AGE, NSW
(per cent)**

Month	Age group (years)						Total unemployment rate
	15-19	20-24	25-34	35-44	45-54	55 and over	
MALES							
1995— February	21.2	13.0	9.1	7.5	5.2	7.5	9.2
1995— November	20.1	11.0	7.3	6.0	5.1	6.4	7.8
December	20.4	11.9	6.5	6.0	5.1	6.6	7.8
1996— January	23.2	15.1	7.4	6.8	5.8	8.1	9.1
February	20.6	13.2	8.0	6.1	6.1	7.9	8.7
FEMALES							
1995— February	23.8	13.0	10.2	7.1	6.8	8.1	10.4
1995— November	15.5	10.7	6.3	6.7	3.5	* 3.9	7.2
December	19.5	10.2	5.5	5.0	3.4	* 2.3	6.8
1996— January	17.1	13.2	6.6	6.0	3.5	* 3.4	7.6
February	20.8	12.1	7.4	6.4	5.4	* 4.8	8.5
PERSONS							
1995— February	22.5	13.0	9.6	7.3	5.8	7.7	9.7
1995— November	17.8	10.9	6.9	6.3	4.5	5.6	7.5
December	20.0	11.1	6.1	5.5	4.4	5.2	7.4
1996— January	20.3	14.2	7.0	6.4	4.8	6.6	8.5
February	20.7	12.7	7.7	6.2	5.8	6.9	8.6

TABLE 12. UNEMPLOYED PERSONS: INDUSTRY (a) AND OCCUPATION OF LAST FULL-TIME JOB, NSW, FEBRUARY 1996 ('000)

	<i>Males</i>	<i>Females</i>	<i>Persons</i>
<i>Had worked for two weeks or more in a full-time job in the last two years</i>	77.7	39.6	117.3
Industry division—			
Agriculture, forestry and fishing	* 5.1	* 3.0	8.1
Manufacturing	15.9	* 3.9	19.8
Construction	12.9	* 0.3	13.2
Wholesale trade	* 3.6	* 1.7	5.3
Retail trade	9.2	8.7	17.9
Accommodation, cafes and restaurants	* 4.6	* 2.7	7.3
Transport and storage	* 2.9	* 0.0	* 2.9
Finance and insurance	* 2.2	* 1.3	* 3.5
Property and business services	6.7	* 3.8	10.4
Education	* 2.2	* 2.5	* 4.7
Health and community services	* 2.0	* 4.9	6.9
Cultural and recreational services	* 2.8	* 1.3	* 4.1
Personal and other services	* 2.2	* 2.7	* 4.9
Other industries (b)	5.5	* 2.8	8.3
Major occupation group—			
Managers and administrators	5.7	* 1.3	6.9
Professionals	5.7	* 3.9	9.7
Para-professionals	* 2.6	* 1.0	* 3.6
Tradespersons	17.6	* 2.1	19.7
Clerks	* 3.1	10.4	13.5
Salespersons and personal service workers	10.8	9.3	20.1
Plant and machine operators, and drivers	8.7	* 1.7	10.4
Labourers and related workers	23.5	9.9	33.4
<i>Had not worked full-time for two weeks or more in the last two years</i>	70.8	64.8	135.6
Looking for first job	19.0	17.7	36.7
Had worked at some time in the past	51.9	47.1	98.9
<i>Stood down</i>	* 2.1	5.4	7.5
Total unemployed	150.5	109.8	260.4

(a) Industry data are now classified according to the Australian and New Zealand Standard Industrial Classification. See the Explanatory Notes for more details. (b) Comprises Mining; Electricity, gas and water supply; Communication services; and Government administration and defence.

UNEMPLOYMENT RATE BY AGE, NSW

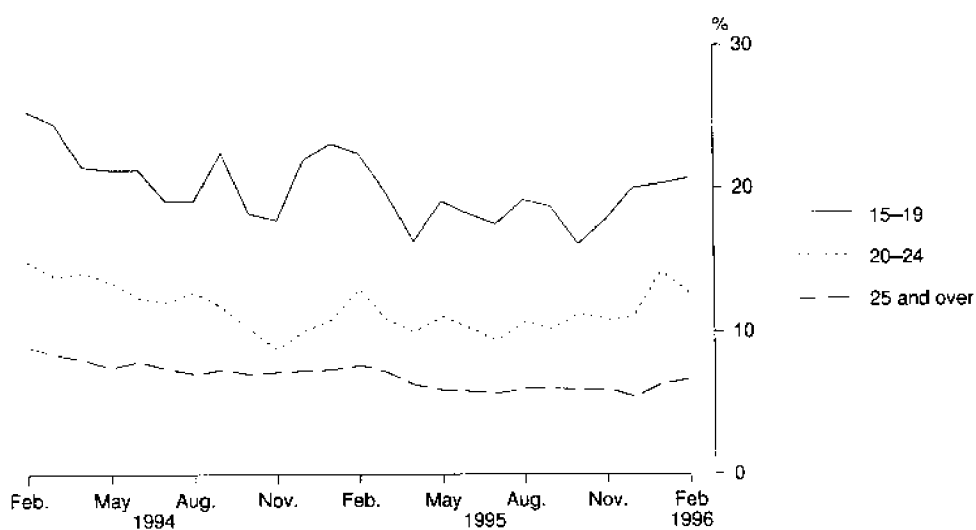


TABLE 13. UNEMPLOYED PERSONS: DURATION OF UNEMPLOYMENT, NSW

Duration of unemployment (weeks)	Males		Females		Persons				
	February 1995	February 1996	February 1995	February 1996	February 1995	November 1995	December 1995	January 1996	February 1996
	— '000 —								
Under 52	92.1	99.0	91.1	82.4	183.2	150.9	154.2	170.8	181.4
Under 2	9.0	6.0	11.9	9.2	20.9	19.5	26.3	17.3	15.1
2 and under 4	11.2	13.7	13.3	12.7	24.5	17.5	24.9	25.5	26.3
4 and under 8	22.0	22.1	21.9	21.1	43.9	18.4	23.1	41.3	43.2
8 and under 13	16.3	17.0	14.2	14.3	30.5	20.6	19.9	25.8	31.3
13 and under 26	14.3	19.2	15.3	13.1	29.6	32.8	27.6	25.9	32.3
26 and under 39	14.6	16.1	11.1	9.6	25.6	23.6	19.2	23.2	25.8
39 and under 52	* 4.7	* 4.8	* 3.3	* 2.5	8.1	18.4	13.2	11.8	7.3
52 and over	65.5	51.5	41.0	27.5	106.5	77.7	71.2	83.9	79.0
52 and under 104	25.0	17.2	14.4	12.5	39.4	31.5	25.7	33.0	29.7
104 and over	40.6	34.3	26.6	15.0	67.1	46.2	45.5	50.9	49.3
Total unemployed	157.6	150.5	132.0	109.8	289.7	228.6	225.5	254.7	260.4
	— Weeks —								
Average	65.3	59.7	51.8	42.8	59.2	63.2	54.0	55.7	52.6
Median	28	20	14	11	21	26	20	20	16

TABLE 14. UNEMPLOYED PERSONS: UNEMPLOYMENT RATE BY BIRTHPLACE AND PERIOD OF ARRIVAL, NSW (per cent)

	February 1995	November 1995	December 1995	January 1996	February 1996
Birthplace—					
Australia	8.9	6.9	6.7	7.9	7.8
Outside Australia	11.8	9.3	9.2	10.0	10.7
Main English speaking countries	8.1	5.0	4.8	6.3	5.7
Other countries	13.8	11.6	11.5	12.0	13.4
Period of arrival of overseas born—					
Before 1961	5.9	* 2.9	* 3.4	* 4.5	5.5
1961–1970	8.6	4.8	4.7	5.9	6.8
1971–1980	11.5	11.0	9.4	11.1	10.5
1981–1985	10.7	9.4	10.0	7.4	9.1
1986–1990	15.6	10.7	12.4	12.6	11.7
1991 to survey date	22.2	18.4	15.9	18.2	22.4
Total unemployment rate	9.7	7.5	7.4	8.5	8.6

UNEMPLOYMENT RATE BY PERIOD OF ARRIVAL OF OVERSEAS BORN, NSW, FEBRUARY 1996

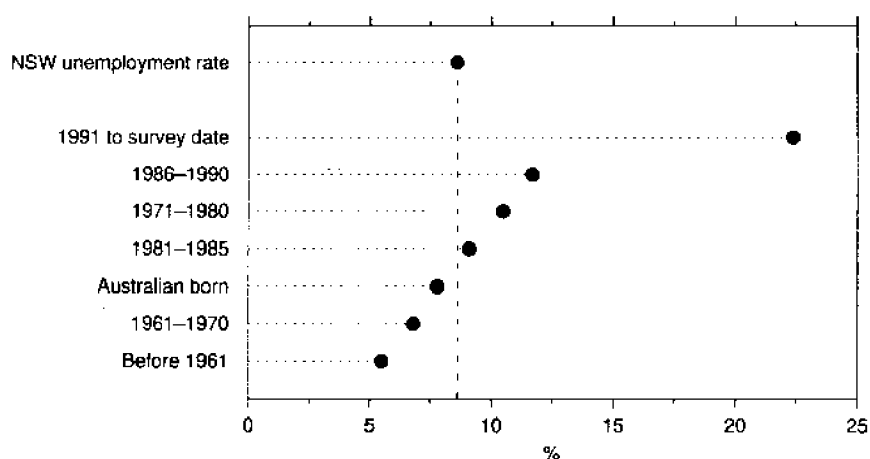


TABLE 15. UNEMPLOYED PERSONS: DURATION OF UNEMPLOYMENT BY AGE, NSW

Month	Duration of unemployment (weeks)					Total unemployed persons ('000)	Average duration (weeks)	Median duration (weeks)
	Under 13 ('000)	13 and under 26 ('000)	26 and under 39 ('000)	39 and under 104 ('000)	104 and over ('000)			
15-19								
1995— February	34.8	7.0	5.8	7.0	* 2.7	57.2	22.0	9
1995— December	33.1	6.5	* 1.9	8.9	* 2.0	52.4	19.1	6
1996— January	30.0	6.4	5.8	6.7	* 3.0	51.9	22.5	8
February	32.2	* 5.1	6.5	5.8	* 1.4	51.1	18.1	8
20-24								
1995— February	24.6	5.4	* 4.7	7.5	10.0	52.1	52.4	13
1995— December	20.7	* 4.4	* 4.3	8.6	5.6	43.5	38.0	14
1996— January	31.2	* 4.2	* 4.9	8.9	6.4	55.6	33.3	9
February	22.1	7.6	* 4.1	6.1	9.3	49.2	48.4	14
25-34								
1995— February	26.5	9.0	7.0	14.1	15.9	72.4	60.8	26
1995— December	16.6	6.6	5.6	6.4	11.4	46.6	62.0	26
1996— January	17.6	6.8	* 5.2	9.2	14.5	53.2	66.5	28
February	25.5	7.8	6.0	8.3	11.9	59.6	55.0	16
35-44								
1995— February	18.7	* 4.4	* 5.1	9.1	16.0	53.4	67.9	32
1995— December	15.1	* 4.5	* 3.1	7.5	12.1	42.3	68.8	30
1996— January	16.6	* 4.8	* 4.6	10.5	11.4	47.8	78.5	28
February	19.2	6.5	* 4.3	5.6	11.6	47.2	65.5	17
45 AND OVER								
1995— February	15.4	* 3.7	* 3.1	9.8	22.6	54.6	94.0	52
1995— December	8.7	5.6	* 4.4	7.5	14.4	40.6	91.8	50
1996— January	14.6	* 3.8	* 2.6	9.6	15.6	46.2	84.2	48
February	16.9	5.3	* 4.8	11.1	15.1	53.3	75.3	34
TOTAL								
1995— February	119.9	29.6	25.6	47.4	67.1	289.7	59.2	21
1995— December	94.2	27.6	19.2	38.9	45.5	225.5	54.0	20
1996— January	109.9	25.9	23.2	44.8	50.9	254.7	55.7	20
February	116.0	32.3	25.8	37.0	49.3	260.4	52.6	16

TABLE 16. LABOUR FORCE STATUS, SYDNEY (MSR)

Month	Employed		Unemployed			Labour force ('000)	Not in labour force ('000)	Civilian population aged 15 and over ('000)	Unemployment rate (per cent)	Participation rate (per cent)	
	Full-time workers ('000)	Part-time workers ('000)	Total ('000)	Looking for full-time work ('000)	Looking for part-time work ('000)						
MALES											
February—											
1992	887.0	85.7	972.7	97.5	10.9	108.3	1,081.0	351.7	1,432.8	10.0	75.5
1993	860.1	73.1	933.2	120.0	11.1	131.1	1,064.3	381.8	1,446.1	12.3	73.6
1994	884.7	94.6	979.3	102.1	11.8	113.9	1,093.2	365.6	1,458.8	10.4	74.9
1994—											
December	910.3	99.2	1,009.5	84.1	13.0	97.0	1,106.6	363.0	1,469.5	8.8	75.3
1995—											
January	898.9	102.5	1,001.4	84.9	13.0	97.9	1,099.3	371.3	1,470.6	8.9	74.8
February	912.6	96.6	1,009.2	82.1	11.2	93.3	1,102.5	369.1	1,471.6	8.5	74.9
November	907.3	116.5	1,023.8	69.7	7.9	77.7	1,101.5	377.2	1,478.6	7.0	74.5
December	926.1	102.8	1,029.0	72.0	10.7	82.7	1,111.6	367.6	1,479.2	7.4	75.1
1996—											
January	929.2	85.6	1,014.9	74.2	11.3	85.4	1,100.3	379.9	1,480.2	7.8	74.3
February	914.2	104.7	1,018.9	75.7	12.0	87.7	1,106.6	374.5	1,481.1	7.9	74.7
MARRIED FEMALES											
February—											
1992	246.2	164.6	410.8	20.4	11.3	31.7	442.5	393.1	835.6	7.2	53.0
1993	240.5	158.4	399.0	21.7	12.4	34.1	433.1	392.4	825.5	7.9	52.5
1994	259.5	174.6	434.1	21.5	11.0	32.5	466.6	369.5	836.1	7.0	55.8
1994—											
December	253.5	174.1	427.7	11.8	10.1	21.9	449.6	383.5	833.1	4.9	54.0
1995—											
January	252.6	166.0	418.6	14.2	7.9	22.1	440.7	405.7	846.3	5.0	52.1
February	249.5	175.1	424.6	18.6	10.5	29.1	453.8	392.2	846.0	6.4	53.6
November	273.9	181.6	455.5	15.2	10.6	25.8	481.3	367.6	848.9	5.4	56.7
December	274.5	173.5	448.0	13.5	5.4	18.9	466.9	378.3	845.2	4.1	55.2
1996—											
January	258.9	160.4	419.3	12.5	7.2	19.7	439.0	411.3	850.3	4.5	51.6
February	258.4	175.4	433.8	20.1	8.1	28.2	462.0	393.4	855.4	6.1	54.0
ALL FEMALES											
February—											
1992	476.1	236.8	712.9	55.8	21.7	77.5	790.4	704.8	1,495.2	9.8	52.9
1993	469.8	239.4	709.2	56.0	23.9	79.9	789.1	719.6	1,508.7	10.1	52.3
1994	488.8	262.4	751.2	53.6	23.1	76.8	827.9	694.0	1,522.0	9.3	54.4
1994—											
December	495.5	274.8	770.3	45.5	23.1	68.7	839.0	694.2	1,533.2	8.2	54.7
1995—											
January	489.1	258.1	747.2	46.2	19.7	65.9	813.1	720.9	1,534.0	8.1	53.0
February	484.9	264.4	749.3	58.4	23.8	82.2	831.5	703.4	1,534.9	9.9	54.2
November	512.0	285.6	797.6	34.1	19.0	53.1	850.7	690.4	1,541.1	6.2	55.2
December	524.8	275.1	799.9	35.0	16.3	51.3	851.2	690.5	1,541.7	6.0	55.2
1996—											
January	506.7	257.0	763.7	37.2	13.9	51.1	814.8	727.9	1,542.7	6.3	52.8
February	497.6	277.8	775.4	43.1	20.6	63.8	839.1	704.6	1,543.7	7.6	54.4
PERSONS											
February—											
1992	1,363.1	322.5	1,685.6	153.3	32.5	185.8	1,871.4	1,056.5	2,928.0	9.9	63.9
1993	1,329.9	312.5	1,642.4	176.0	35.0	211.0	1,853.4	1,101.4	2,954.8	11.4	62.7
1994	1,373.5	357.0	1,730.5	155.7	34.9	190.7	1,921.1	1,059.6	2,980.7	9.9	64.5
1994—											
December	1,405.8	374.0	1,779.9	129.6	36.1	165.7	1,945.6	1,057.1	3,002.7	8.5	64.8
1995—											
January	1,388.0	360.5	1,748.5	131.1	32.7	163.9	1,912.4	1,092.2	3,004.6	8.6	63.6
February	1,397.5	361.0	1,758.5	140.5	35.0	175.5	1,934.0	1,072.4	3,006.4	9.1	64.3
November	1,419.3	402.1	1,821.4	103.8	26.9	130.8	1,952.2	1,067.6	3,019.7	6.7	64.6
December	1,450.9	377.9	1,828.8	107.0	27.0	134.0	1,962.8	1,058.1	3,020.9	6.8	65.0
1996—											
January	1,435.9	342.7	1,778.6	111.4	25.2	136.5	1,915.1	1,107.8	3,022.9	7.1	63.4
February	1,411.7	382.5	1,794.2	118.9	32.6	151.5	1,945.7	1,079.1	3,024.8	7.8	64.3

TABLE 17. LABOUR FORCE STATUS, BALANCE OF NSW (MSR)

Month	Employed		Unemployed			Labour force ('000)	Not in labour force ('000)	Civilian population aged 15 and over ('000)	Unemployment rate (per cent)	Participation rate (per cent)	
	Full-time workers ('000)	Part-time workers ('000)	Total ('000)	Looking for full-time work ('000)	Looking for part-time work ('000)						
MALES											
February—											
1992	480.4	51.4	531.8	74.2	* 4.4	78.7	610.5	236.6	847.0	12.9	72.1
1993	468.6	48.6	517.3	86.7	* 5.1	91.9	609.1	245.2	854.3	15.1	71.3
1994	459.5	53.9	513.4	77.7	* 5.1	82.8	596.2	266.2	862.4	13.9	69.1
1994—											
December	485.5	63.7	549.1	55.9	* 4.8	60.8	609.9	261.6	871.5	10.0	70.0
1995—											
January	485.9	56.8	542.7	62.5	5.7	68.2	610.9	262.4	873.2	11.2	70.0
February	496.1	59.1	555.2	55.8	8.6	64.3	619.5	255.4	874.9	10.4	70.8
November	501.2	66.4	567.6	51.5	5.4	56.9	624.5	265.6	890.0	9.1	70.2
December	513.9	64.9	578.7	48.9	* 4.7	53.6	632.4	259.5	891.9	8.5	70.9
1996—											
January	501.9	57.2	559.1	62.8	9.6	72.4	631.5	262.4	893.9	11.5	70.6
February	507.3	62.3	569.6	57.8	* 5.0	62.8	632.4	263.6	896.0	9.9	70.6
MARRIED FEMALES											
February—											
1992	120.3	115.7	236.0	14.6	5.0	19.6	255.6	274.6	530.2	7.7	48.2
1993	124.9	116.1	241.0	16.7	5.3	22.0	263.0	259.8	522.8	8.4	50.3
1994	132.3	109.3	241.6	17.3	* 4.4	22.4	264.0	280.9	544.9	8.5	48.5
1994—											
December	134.1	122.7	256.8	10.3	6.5	16.8	273.6	271.5	545.1	6.1	50.2
1995—											
January	127.1	117.3	244.5	10.2	* 5.2	15.4	259.8	286.6	546.4	5.9	47.6
February	133.8	123.3	257.1	11.7	9.6	21.3	278.4	270.4	548.8	7.7	50.7
November	146.6	132.2	278.8	11.6	5.4	17.0	295.8	261.3	557.1	5.7	53.1
December	141.9	134.6	276.4	9.6	* 3.3	12.9	289.3	264.6	553.9	4.4	52.2
1996—											
January	139.0	125.4	264.4	10.3	* 4.1	14.3	278.7	272.4	551.1	5.1	50.6
February	141.1	129.2	270.3	11.8	* 4.7	16.4	286.7	271.4	558.1	5.7	51.4
ALL FEMALES											
February—											
1992	200.5	160.0	360.5	35.2	13.2	48.4	408.9	455.0	863.9	11.8	47.3
1993	200.9	159.1	360.1	44.4	11.1	55.6	415.6	457.1	872.7	13.4	47.6
1994	198.7	158.0	356.7	41.7	11.3	53.0	409.7	472.8	882.5	12.9	46.4
1994—											
December	217.1	180.3	397.4	28.1	14.3	42.4	439.8	453.3	893.1	9.6	49.2
1995—											
January	203.6	175.5	379.0	28.5	13.6	42.1	421.2	473.4	894.6	10.0	47.1
February	205.4	180.6	386.0	30.9	19.0	49.9	435.9	460.1	896.0	11.4	48.6
November	223.0	199.6	422.7	30.9	10.0	40.9	463.6	447.2	910.8	8.8	50.9
December	219.8	204.6	424.5	30.3	7.6	37.9	462.3	450.3	912.7	8.2	50.7
1996—											
January	224.1	185.1	409.2	32.5	13.2	45.7	454.9	459.9	914.8	10.0	49.7
February	220.4	187.4	407.8	34.1	12.0	46.1	453.9	463.1	916.9	10.1	49.5
PERSONS											
February—											
1992	681.0	211.4	892.3	109.4	17.6	127.0	1,019.4	691.6	1,710.9	12.5	59.6
1993	669.6	207.7	877.3	131.2	16.3	147.5	1,024.8	702.3	1,727.1	14.4	59.3
1994	658.2	211.8	870.1	119.4	16.5	135.9	1,005.9	738.9	1,744.9	13.5	57.6
1994—											
December	702.5	244.0	946.6	84.0	19.2	103.2	1,049.7	714.9	1,764.7	9.8	59.5
1995—											
January	689.5	232.2	921.7	91.0	19.3	110.3	1,032.1	735.7	1,767.8	10.7	58.4
February	701.5	239.7	941.2	86.7	27.5	114.2	1,055.4	715.5	1,770.9	10.8	59.6
November	724.3	266.0	990.2	82.4	15.5	97.8	1,088.0	712.8	1,800.9	9.0	60.4
December	733.7	269.5	1,003.2	79.2	12.3	91.5	1,094.7	709.9	1,804.6	8.4	60.7
1996—											
January	726.0	242.3	968.3	95.4	22.8	118.1	1,086.5	722.3	1,808.7	10.9	60.1
February	727.7	249.7	977.4	91.9	17.0	108.9	1,086.3	726.6	1,812.9	10.0	59.9

TABLE 18. LABOUR FORCE STATUS (a), REGIONS OF NSW

Month	Employed ('000)	Unemployed ('000)	Labour force ('000)	Not in labour force ('000)	Unemployment rate (per cent)	Participation rate (per cent)
INNER SYDNEY AND INNER WESTERN SYDNEY (SRs)						
MALES	1995— February	116.9	12.7	129.6	43.4	74.9
	1995— December	117.1	6.4	123.5	44.7	73.4
	1996— January	119.8	5.1	124.9	45.5	73.3
	February	121.8	9.3	131.1	45.5	74.2
FEMALES	1995— February	88.9	10.8	99.8	76.8	56.5
	1995— December	93.3	4.7	98.0	73.1	57.3
	1996— January	87.1	6.9	93.9	70.8	57.0
	February	92.4	7.7	100.0	69.9	58.9
PERSONS	1995— February	205.8	23.6	229.4	120.2	65.6
	1995— December	210.4	11.0	221.5	117.8	65.3
	1996— January	206.8	12.0	218.8	116.3	65.3
	February	214.1	17.0	231.1	115.5	66.7
INNER SYDNEY (SR)						
MALES	1995— February	71.9	7.3	79.2	25.6	75.6
	1995— December	76.8	4.2	81.1	26.8	75.2
	1996— January	78.3	* 3.5	81.8	28.9	* 4.2
	February	78.9	6.2	85.0	25.8	76.8
FEMALES	1995— February	56.8	6.0	62.8	44.2	58.7
	1995— December	60.6	* 2.2	62.8	40.5	* 3.5
	1996— January	58.5	4.9	63.4	40.0	7.8
	February	61.0	5.5	66.5	40.5	8.3
PERSONS	1995— February	128.7	13.3	142.0	69.9	67.0
	1995— December	137.4	6.4	143.9	67.3	68.1
	1996— January	136.8	8.4	145.2	69.0	67.8
	February	139.8	11.7	151.5	66.3	69.6
EASTERN SUBURBS (SR)						
MALES	1995— February	70.4	7.8	78.2	30.3	72.1
	1995— December	73.2	4.9	78.1	27.1	74.2
	1996— January	69.9	5.8	75.8	28.0	73.0
	February	67.2	4.7	71.9	25.7	73.7
FEMALES	1995— February	54.9	7.2	62.1	47.1	56.9
	1995— December	57.3	* 2.9	60.2	39.6	* 4.8
	1996— January	55.1	* 2.0	57.0	43.9	* 3.4
	February	52.5	3.2	55.7	42.9	5.7
PERSONS	1995— February	125.3	15.0	140.3	77.4	64.5
	1995— December	130.5	7.8	138.2	66.7	67.5
	1996— January	125.0	7.8	132.8	71.9	64.9
	February	119.7	7.9	127.6	68.6	65.0

TABLE 18. LABOUR FORCE STATUS (a), REGIONS OF NSW—continued

Month		Employed (<i>'000</i>)	Unemployed (<i>'000</i>)	Labour force (<i>'000</i>)	Not in labour force (<i>'000</i>)	Unemp- loyment rate (per cent)	Partici- pation rate (per cent)
ST GEORGE-SUTHERLAND (SR)							
MALES	1995— February	120.1	7.2	127.4	42.2	5.7	75.1
	1995— December	120.1	5.5	125.7	43.1	4.4	74.5
	1996— January	114.2	4.8	119.0	48.5	4.1	71.0
	1996— February	116.2	4.1	120.3	45.9	3.4	72.4
FEMALES	1995— February	84.4	5.4	89.8	79.0	6.0	53.2
	1995— December	102.7	* 2.8	105.5	69.5	* 2.7	60.3
	1996— January	92.2	* 1.9	94.0	77.9	* 2.0	54.7
	1996— February	93.2	4.4	97.5	73.7	4.5	57.0
PERSONS	1995— February	204.5	12.6	217.1	121.2	5.8	64.2
	1995— December	222.9	8.3	231.2	112.6	3.6	67.3
	1996— January	206.3	6.7	213.0	126.4	3.1	62.8
	1996— February	209.4	8.5	217.8	119.5	3.9	64.6
CANTERBURY-BANKSTOWN (SR)							
MALES	1995— February	78.3	8.7	87.0	33.6	10.0	72.1
	1995— December	80.5	10.4	91.0	30.6	11.5	74.8
	1996— January	79.9	8.2	88.1	34.2	9.3	72.0
	1996— February	73.6	9.3	82.9	36.3	11.2	69.6
FEMALES	1995— February	50.2	10.5	60.7	62.3	17.3	49.3
	1995— December	56.6	4.9	61.5	63.1	8.0	49.4
	1996— January	55.2	4.9	60.0	68.6	8.1	46.7
	1996— February	53.9	5.7	59.6	69.0	9.5	46.3
PERSONS	1995— February	128.5	19.2	147.7	95.9	13.0	60.6
	1995— December	137.1	15.4	152.5	93.7	10.1	61.9
	1996— January	135.0	13.0	148.1	102.8	8.8	59.0
	1996— February	127.5	15.0	142.5	105.2	10.5	57.5
FAIRFIELD-LIVERPOOL AND OUTER SOUTH WESTERN SYDNEY (SRs)							
MALES	1995— February	124.4	18.7	143.1	43.6	13.1	76.6
	1995— December	137.6	22.7	160.3	42.1	14.2	79.2
	1996— January	134.4	19.8	154.3	45.6	12.9	77.2
	1996— February	133.0	17.2	150.2	45.7	11.4	76.7
FEMALES	1995— February	86.1	16.8	102.9	86.6	16.3	54.3
	1995— December	93.7	14.6	108.3	99.5	13.5	52.1
	1996— January	89.6	12.5	102.1	103.9	12.2	49.6
	1996— February	86.6	15.4	102.0	100.9	15.1	50.3
PERSONS	1995— February	210.5	35.5	245.9	130.2	14.4	65.4
	1995— December	231.3	37.4	268.6	141.5	13.9	65.5
	1996— January	224.0	32.3	256.3	149.5	12.6	63.2
	1996— February	219.6	32.6	252.2	146.6	12.9	63.2

TABLE 18. LABOUR FORCE STATUS (a), REGIONS OF NSW—continued

Month	Employed ('000)	Unemployed ('000)	Labour force ('000)	Not in labour force ('000)	Unemp- loyment rate (per cent)	Partici- pation rate (per cent)	
FAIRFIELD-LIVERPOOL (SR)							
MALES	1995— February	67.5	14.8	82.4	27.9	18.0	74.7
	1995— December	74.4	17.9	92.3	25.4	19.4	78.4
	1996— January	74.0	14.8	88.7	29.0	16.6	75.3
	February	70.4	12.4	82.9	28.7	15.0	74.3
FEMALES	1995— February	50.9	11.7	62.6	53.0	18.7	54.2
	1995— December	46.7	12.4	59.1	63.0	21.0	48.4
	1996— January	47.6	9.5	57.1	64.4	16.7	47.0
	February	43.8	12.0	55.8	61.0	21.5	47.8
PERSONS	1995— February	118.4	26.6	145.0	80.9	18.3	64.2
	1995— December	121.1	30.3	151.4	88.4	20.0	63.1
	1996— January	121.6	24.3	145.9	93.4	16.7	61.0
	February	114.2	24.4	138.6	89.7	17.6	60.7
CENTRAL WESTERN SYDNEY (SR)							
MALES	1995— February	56.1	6.2	62.3	28.0	10.0	69.0
	1995— December	56.2	9.4	65.6	27.0	14.3	70.9
	1996— January	53.0	10.8	63.8	26.7	16.9	70.5
	February	59.0	9.8	68.7	25.9	14.2	72.7
FEMALES	1995— February	35.7	3.6	39.3	60.9	9.1	39.2
	1995— December	38.0	5.5	43.4	52.0	12.6	45.5
	1996— January	34.6	4.6	39.2	56.1	11.7	41.1
	February	34.8	5.8	40.6	50.8	14.4	44.4
PERSONS	1995— February	91.7	9.8	101.6	88.9	9.7	53.3
	1995— December	94.2	14.9	109.1	78.9	13.7	58.0
	1996— January	87.6	15.3	102.9	82.8	14.9	55.4
	February	93.7	15.6	109.4	76.7	14.3	58.8
OUTER WESTERN SYDNEY (SR)							
MALES	1995— February	82.4	6.0	88.4	19.8	6.8	81.7
	1995— December	77.0	* 3.5	80.5	23.5	* 4.4	77.4
	1996— January	75.4	5.8	81.2	21.8	7.1	78.9
	February	78.8	4.9	83.7	21.6	5.9	79.5
FEMALES	1995— February	57.7	5.4	63.1	47.1	8.6	57.2
	1995— December	59.9	* 3.1	63.1	42.3	* 5.0	59.9
	1996— January	59.2	4.0	63.3	40.8	6.4	60.8
	February	60.8	5.0	65.8	43.7	7.6	60.1
PERSONS	1995— February	140.1	11.4	151.5	66.9	7.5	69.4
	1995— December	137.0	6.6	143.6	65.8	4.6	68.6
	1996— January	134.7	9.8	144.5	62.6	6.8	69.8
	February	139.6	9.9	149.5	65.4	6.6	69.6

TABLE 18. LABOUR FORCE STATUS (a), REGIONS OF NSW—continued

Month	Employed ('000)	Unemployed ('000)	Labour force ('000)	Not in labour force ('000)	Unemployment rate (per cent)	Participation rate (per cent)
BLACKTOWN—BAULKHAM HILLS (SR)						
MALES	1995— February	91.7	11.0	102.7	28.1	78.5
	1995— December	107.4	6.3	113.7	25.0	82.0
	1996— January	104.4	8.5	112.9	27.1	80.7
	1996— February	103.2	9.6	112.7	25.9	81.3
FEMALES	1995— February	72.8	5.4	78.1	62.3	6.9
	1995— December	78.3	5.9	84.1	61.0	7.0
	1996— January	74.7	4.5	79.2	64.9	5.7
	1996— February	77.2	6.5	83.7	58.3	7.8
PERSONS	1995— February	164.5	16.3	180.8	90.4	9.0
	1995— December	185.6	12.2	197.8	85.9	6.2
	1996— January	179.1	13.0	192.1	92.0	6.8
	1996— February	180.3	16.1	196.4	84.1	8.2
LOWER NORTHERN SYDNEY (SR)						
MALES	1995— February	75.9	* 4.8	80.7	26.2	* 5.9
	1995— December	67.4	* 3.1	70.6	22.1	* 4.4
	1996— January	71.0	5.7	76.8	23.2	7.5
	1996— February	71.5	5.9	77.4	25.5	7.6
FEMALES	1995— February	76.3	4.9	81.2	46.6	6.0
	1995— December	64.7	* 1.6	66.3	50.5	* 2.4
	1996— January	64.1	* 3.6	67.8	54.0	* 5.3
	1996— February	66.9	* 0.9	67.8	48.6	* 1.3
PERSONS	1995— February	152.2	9.7	161.9	72.8	6.0
	1995— December	132.1	* 4.7	136.8	72.5	* 3.4
	1996— January	135.2	9.4	144.5	77.2	6.5
	1996— February	138.4	6.8	145.2	74.1	4.7
HORNSBY—KU-RING-GAI (SR)						
MALES	1995— February	73.7	* 2.3	76.0	21.2	* 3.0
	1995— December	72.5	* 2.6	75.1	25.1	* 3.5
	1996— January	71.4	* 2.3	73.6	21.6	* 3.1
	1996— February	72.1	* 3.5	75.6	19.9	* 4.6
FEMALES	1995— February	56.2	* 3.6	59.8	40.9	* 5.9
	1995— December	57.8	* 0.6	58.4	44.7	* 1.1
	1996— January	53.2	* 1.9	55.1	45.6	* 3.4
	1996— February	52.4	* 2.4	54.8	43.1	* 4.4
PERSONS	1995— February	129.9	5.8	135.8	62.1	4.3
	1995— December	130.3	* 3.2	133.6	69.8	* 2.4
	1996— January	124.6	4.1	128.7	67.2	3.2
	1996— February	124.5	5.9	130.4	63.0	4.5

TABLE 18. LABOUR FORCE STATUS (a), REGIONS OF NSW—continued

	Month	Employed (<i>'000</i>)	Unemployed (<i>'000</i>)	Labour force (<i>'000</i>)	Not in labour force (<i>'000</i>)	Unemp- loyment rate (per cent)	Partici- pation rate (per cent)
NORTHERN BEACHES (SR) (b)							
MALES	1995— February	64.0	2.3	66.3	18.3	3.5	78.4
	1995— December	64.1	* 1.6	65.6	19.7	* 2.4	76.9
	1996— January	65.3	* 1.6	66.9	20.0	* 2.4	77.0
	1996— February	60.0	* 1.9	61.9	20.2	* 3.0	75.4
FEMALES	1995— February	50.7	3.2	53.9	35.0	5.9	60.6
	1995— December	53.0	2.6	55.6	40.5	4.7	57.9
	1996— January	55.2	* 1.0	56.2	46.9	* 1.7	54.5
	1996— February	54.9	2.2	57.1	46.6	3.9	55.1
PERSONS	1995— February	114.7	5.5	120.2	53.3	4.5	69.3
	1995— December	117.1	4.2	121.3	60.2	3.4	66.8
	1996— January	120.5	2.6	123.1	66.9	2.1	64.8
	1996— February	114.9	4.1	119.0	66.8	3.4	64.1
GOSFORD-WYONG (SR)							
MALES	1995— February	55.3	5.5	60.9	34.5	9.1	63.8
	1995— December	55.7	6.2	61.9	37.7	10.0	62.2
	1996— January	56.1	7.0	63.1	37.7	11.1	62.6
	1996— February	62.6	7.6	70.2	36.4	10.8	65.8
FEMALES	1995— February	35.5	5.5	41.0	58.7	13.5	41.1
	1995— December	44.6	* 2.0	46.6	54.9	* 4.4	45.9
	1996— January	43.6	* 3.5	47.1	54.4	* 7.4	46.4
	1996— February	49.9	4.5	54.4	57.1	8.2	48.8
PERSONS	1995— February	90.8	11.1	101.9	93.2	10.9	52.2
	1995— December	100.3	8.2	108.6	92.6	7.6	54.0
	1996— January	99.7	10.5	110.2	92.2	9.5	54.4
	1996— February	112.5	12.1	124.6	93.5	9.7	57.1
HUNTER (SR)							
MALES	1995— February	128.7	15.6	144.3	66.2	10.8	68.5
	1995— December	125.0	13.7	138.7	61.5	9.9	69.3
	1996— January	121.7	20.0	141.7	63.0	14.1	69.2
	1996— February	117.5	18.5	136.0	64.2	13.6	67.9
FEMALES	1995— February	79.7	11.8	91.6	106.4	12.9	46.3
	1995— December	92.1	9.9	102.0	107.2	9.7	48.8
	1996— January	90.2	12.7	102.9	107.6	12.4	48.9
	1996— February	87.1	11.4	98.5	108.7	11.6	47.5
PERSONS	1995— February	208.5	27.4	235.9	172.6	11.6	57.7
	1995— December	217.1	23.6	240.7	168.7	9.8	58.8
	1996— January	211.8	32.7	244.6	170.6	13.4	58.9
	1996— February	204.6	29.9	234.5	172.9	12.7	57.6

TABLE 18. LABOUR FORCE STATUS (a), REGIONS OF NSW—continued

	Month	Employed (<i>'000</i>)	Unemployed (<i>'000</i>)	Labour force (<i>'000</i>)	Not in labour force (<i>'000</i>)	Unemp- loyment rate (per cent)	Partici- pation rate (per cent)
NEWCASTLE (SRS)							
MALES	1995— February	108.4	14.9	123.4	59.8	12.1	67.4
	1995— December	101.7	13.1	114.8	52.4	11.4	68.7
	1996— January	98.2	18.0	116.1	55.3	15.5	67.8
	February	97.3	17.1	114.4	57.7	15.0	66.5
FEMALES	1995— February	68.5	10.7	79.2	92.7	13.5	46.1
	1995— December	78.0	7.9	85.9	94.9	9.2	47.5
	1996— January	74.5	11.2	85.8	95.3	13.1	47.4
	February	70.8	11.1	81.9	97.4	13.5	45.7
PERSONS	1995— February	176.9	25.6	202.5	152.5	12.7	57.0
	1995— December	179.8	21.0	200.8	147.2	10.5	57.7
	1996— January	172.7	29.2	201.9	150.6	14.5	57.3
	February	168.1	28.2	196.3	155.2	14.4	55.9
ILLAWARRA AND SOUTH EASTERN (SRs)							
MALES	1995— February	144.4	18.7	163.0	57.4	11.5	74.0
	1995— December	145.3	13.1	158.3	65.9	8.3	70.6
	1996— January	136.0	16.0	151.9	70.8	10.5	68.2
	February	143.3	16.2	159.5	71.5	10.2	69.0
FEMALES	1995— February	93.6	14.4	108.0	116.0	13.4	48.2
	1995— December	106.9	8.1	115.0	125.0	7.0	47.9
	1996— January	101.0	11.0	112.0	126.2	9.8	47.0
	February	101.9	11.8	113.8	129.4	10.4	46.8
PERSONS	1995— February	238.0	33.1	271.1	173.4	12.2	61.0
	1995— December	252.1	21.2	273.3	190.8	7.7	58.9
	1996— January	237.0	27.0	264.0	197.0	10.2	57.3
	February	245.2	28.0	273.2	200.9	10.3	57.6
ILLAWARRA (SR)							
MALES	1995— February	96.1	13.0	109.0	37.5	11.9	74.4
	1995— December	92.1	11.9	104.0	42.5	11.4	71.0
	1996— January	87.0	11.6	98.6	47.4	11.8	67.5
	February	90.6	13.3	103.9	48.5	12.8	68.2
FEMALES	1995— February	59.2	10.6	69.8	84.4	15.3	45.3
	1995— December	62.2	5.9	68.1	95.7	8.7	41.6
	1996— January	62.8	8.3	71.1	93.6	11.6	43.1
	February	63.0	8.8	71.8	91.6	12.2	43.9
PERSONS	1995— February	155.2	23.6	178.8	121.9	13.2	59.5
	1995— December	154.3	17.8	172.1	138.2	10.3	55.5
	1996— January	149.8	19.9	169.7	141.0	11.7	54.6
	February	153.6	22.1	175.7	140.1	12.6	55.6

TABLE 18. LABOUR FORCE STATUS (a), REGIONS OF NSW—continued

Month	Employed (<i>'000</i>)	Unemployed (<i>'000</i>)	Labour force (<i>'000</i>)	Not in labour force (<i>'000</i>)	Unemp- loyment rate (per cent)	Partici- pation rate (per cent)	
WOLLONGONG (SRs)							
MALES	1995— February	72.5	8.7	81.2	25.8	10.7	75.9
	1995— December	68.8	9.4	78.2	27.3	12.1	74.1
	1996— January	66.9	8.5	75.4	32.1	11.3	70.1
	February	70.0	9.6	79.6	32.2	12.1	71.2
FEMALES	1995— February	43.8	8.0	51.8	57.9	15.5	47.2
	1995— December	42.3	4.0	46.2	68.7	8.6	40.2
	1996— January	45.2	7.2	52.4	66.3	13.8	44.2
	February	44.4	7.3	51.8	66.8	14.2	43.7
PERSONS	1995— February	116.3	16.7	133.0	83.7	12.6	61.4
	1995— December	111.0	13.4	124.4	96.0	10.8	56.4
	1996— January	112.1	15.7	127.8	98.4	12.3	56.5
	February	114.4	17.0	131.4	99.1	12.9	57.0
RICHMOND-TWEED AND MID-NORTH COAST (SRs)							
MALES	1995— February	98.2	13.0	111.1	56.3	11.7	66.4
	1995— December	90.4	14.3	104.6	65.9	13.6	61.3
	1996— January	96.3	17.3	113.6	63.4	15.3	64.2
	February	95.9	16.6	112.5	61.7	14.7	64.6
FEMALES	1995— February	75.2	10.6	85.8	92.8	12.4	48.0
	1995— December	72.1	8.4	80.5	97.4	10.5	45.3
	1996— January	78.1	8.2	86.3	98.0	9.5	46.8
	February	72.9	9.6	82.5	96.2	11.7	46.2
PERSONS	1995— February	173.4	23.6	197.0	149.1	12.0	56.9
	1995— December	162.5	22.7	185.1	163.3	12.2	53.1
	1996— January	174.4	25.6	199.9	161.4	12.8	55.3
	February	168.8	26.2	195.0	158.0	13.4	55.2
NORTHERN, FAR WEST-NORTH WESTERN AND CENTRAL WEST (SRs) (c)							
MALES	1995— February	120.0	11.7	131.6	49.4	8.9	72.7
	1995— December	131.7	8.8	140.5	41.5	6.3	77.2
	1996— January	122.6	12.7	135.3	42.2	9.4	76.2
	February	134.4	6.9	141.2	41.7	4.9	77.2
FEMALES	1995— February	86.3	8.3	94.6	95.2	8.8	49.8
	1995— December	94.5	7.6	102.1	74.1	7.5	58.0
	1996— January	87.1	7.6	94.6	79.7	8.0	54.3
	February	90.9	8.2	99.1	78.0	8.3	56.0
PERSONS	1995— February	206.3	19.9	226.2	144.6	8.8	61.0
	1995— December	226.2	16.4	242.6	115.6	6.8	67.7
	1996— January	209.7	20.2	229.9	121.9	8.8	65.3
	February	225.3	15.1	240.4	119.7	6.3	66.8

TABLE 18. LABOUR FORCE STATUS (a), REGIONS OF NSW—continued

	Month	Employed (<i>'000</i>)	Unemployed (<i>'000</i>)	Labour force (<i>'000</i>)	Not in labour force (<i>'000</i>)	Unemp- loyment rate (per cent)	Partici- pation rate (per cent)
MURRAY-MURRUMBIDGEE (SR)							
MALES	1995— February	60.9 *	5.1	66.0	24.5	7.7	72.9
	1995— December	82.2	* 3.5	85.6	22.8	* 4.0	79.0
	1996— January	78.9	6.1	85.0	21.2	7.2	80.0
	February	75.5	* 4.7	80.3	22.4	* 5.9	78.2
FEMALES	1995— February	49.2	* 4.0	53.3	45.5	* 7.6	54.0
	1995— December	55.6	* 3.4	58.9	43.2	* 5.7	57.7
	1996— January	50.3	5.4	55.7	44.5	9.6	55.6
	February	52.8	5.0	57.8	45.7	8.7	55.8
PERSONS	1995— February	110.1	9.1	119.2	70.0	7.7	63.0
	1995— December	137.7	6.8	144.5	65.9	4.7	68.7
	1996— January	129.2	11.5	140.7	65.7	8.2	68.2
	February	128.3	9.8	138.1	68.1	7.1	67.0

(a) While the Labour Force Survey is designed primarily to produce reliable estimates at the national and State/Territory level, it also delivers estimates for a number of regions within States. As with national and State estimates, regional labour force estimates are subject to sampling error. Since estimates for regions are components of corresponding estimates at the State level — and are thus based on a considerably smaller sample size — they are subject to higher relative standard error. Care should therefore be taken in interpretation of regional estimates, particularly month to month movements. Tables of standard errors are included in the Technical Note on pages 43–47 of this publication. (b) Previously Manly-Warringah (SR). (c) Excludes components of Far West (SD). These are published as part of Balance of NSW (MSR).

**TABLE 19. EMPLOYED PERSONS: INDUSTRY (a) AND OCCUPATION
SYDNEY (MSR) AND BALANCE OF NSW (MSR), FEBRUARY 1996
(*000)**

<i>Industry division and Major occupation group</i>	<i>Males</i>	<i>Females</i>	<i>Persons</i>
SYDNEY (MSR)			
Industry—			
Agriculture, forestry and fishing	9.9	*5.1	15.0
Mining	*4.7	*0.0	*4.7
Manufacturing	169.9	81.1	251.0
Electricity, gas and water supply	14.4	*3.7	18.1
Construction	121.3	14.5	135.8
Wholesale trade	90.3	42.6	132.9
Retail trade	131.4	125.9	257.4
Accommodation, cafes and restaurants	34.2	39.6	73.7
Transport and storage	66.4	22.7	89.1
Communication services	33.3	14.1	47.4
Finance and insurance	51.1	58.5	109.6
Property and business services	113.1	86.6	199.6
Government administration and defence	40.0	28.1	68.1
Education	36.4	77.5	113.9
Health and community services	40.8	117.0	157.8
Cultural and recreational services	24.4	21.2	45.6
Personal and other services	37.4	37.0	74.4
Occupation—			
Managers and administrators	129.8	38.6	168.4
Professionals	176.0	131.4	307.4
Para-professionals	50.1	53.0	103.1
Tradespersons	220.1	24.1	244.1
Clerks	87.6	262.4	350.0
Salespersons and personal service workers	122.0	179.4	301.3
Plant and machine operators, and drivers	76.5	11.4	87.9
Labourers and related workers	156.9	75.1	232.0
Total employed	1,018.9	775.4	1,794.2
BALANCE OF NSW (MSR)			
Industry—			
Agriculture, forestry and fishing	79.1	33.5	112.6
Mining	21.8	*0.9	22.7
Manufacturing	87.6	23.4	111.0
Electricity, gas and water supply	10.7	*3.0	13.8
Construction	64.9	10.2	75.1
Wholesale trade	31.4	9.8	41.3
Retail trade	71.9	83.5	155.4
Accommodation, cafes and restaurants	22.4	34.2	56.5
Transport and storage	35.2	7.1	42.4
Communication services	10.5	5.5	16.1
Finance and insurance	7.4	14.3	21.7
Property and business services	28.1	33.8	61.9
Government administration and defence	32.5	12.0	44.5
Education	22.5	45.6	68.1
Health and community services	21.6	68.9	90.4
Cultural and recreational services	5.8	6.0	11.8
Personal and other services	16.2	16.0	32.2
Occupation—			
Managers and administrators	95.8	34.3	130.1
Professionals	58.2	47.7	105.9
Para-professionals	23.6	26.5	50.1
Tradespersons	127.6	16.8	144.4
Clerks	20.0	112.8	132.8
Salespersons and personal service workers	49.0	106.1	155.0
Plant and machine operators, and drivers	78.7	9.3	88.0
Labourers and related workers	116.6	54.4	171.0
Total employed	569.6	407.8	977.4

(a) Industry data are now classified according to the Australian and New Zealand Standard Industrial Classification. See the Explanatory Notes for more details.

TABLE 20. LABOUR FORCE STATUS: ORIGINAL SERIES, ACT

Month	Employed			Unemployed			Labour force ('000)	Not in labour force ('000)	Civilian population aged 15 and over ('000)	Unemployment rate (per cent)	Participation rate (per cent)
	Full-time workers ('000)	Part-time workers ('000)	Total ('000)	Looking for full-time work ('000)	Looking for part-time work ('000)	Total ('000)					
MALES											
February—											
1992	68.1	8.9	77.0	6.0	* 1.3	7.2	84.3	21.2	105.4	8.6	79.9
1993	72.1	9.0	81.1	6.1	1.0	7.1	88.2	19.9	108.1	8.0	81.6
1994	74.1	9.1	83.3	6.7	1.8	8.6	91.8	19.3	111.1	9.3	82.7
1994—											
December	73.6	10.0	83.6	6.5	1.3	7.8	91.4	21.1	112.5	8.6	81.2
1995—											
January	72.3	8.7	81.0	5.9	1.4	7.3	88.4	24.1	112.5	8.3	78.6
February	72.5	10.4	82.9	5.9	1.5	7.4	90.3	22.2	112.5	8.2	80.3
November	72.6	11.9	84.5	5.3	1.2	6.6	91.1	22.2	113.3	7.2	80.4
December	75.0	11.1	86.1	5.4	1.4	6.8	92.9	20.5	113.3	7.3	81.9
1996—											
January	73.9	9.7	83.5	7.0	1.4	8.4	91.9	21.5	113.4	9.1	81.0
February	73.1	10.3	83.4	5.9	1.6	7.6	91.0	22.6	113.6	8.3	80.1
MARRIED FEMALES											
February—											
1992	26.0	14.4	40.4	1.6	* 0.8	2.5	42.8	22.9	65.7	5.8	65.2
1993	26.5	13.5	40.0	1.8	* 0.5	2.2	42.2	20.5	62.7	5.3	67.3
1994	24.6	14.7	39.4	1.2	* 0.8	2.0	41.4	22.7	64.1	4.9	64.6
1994—											
December	25.9	15.2	41.0	1.1	* 0.4	1.5	42.6	21.2	63.8	3.6	66.7
1995—											
January	22.3	14.7	37.0	1.2	* 0.8	2.1	39.0	24.6	63.6	5.3	61.4
February	24.9	15.1	40.0	1.4	1.3	2.8	42.8	21.6	64.4	6.4	66.4
November	28.3	17.7	46.0	1.0	* 0.5	1.6	47.5	20.7	68.2	3.3	69.7
December	27.6	16.5	44.1	1.1	* 0.7	1.8	45.9	21.3	67.2	3.9	68.3
1996—											
January	27.7	15.2	42.9	1.0	* 0.6	1.6	44.5	22.1	66.7	3.7	66.8
February	26.8	17.2	43.9	1.2	1.0	2.2	46.1	20.3	66.5	4.8	69.4
ALL FEMALES											
February—											
1992	43.2	22.7	65.9	4.0	2.1	6.1	72.0	39.7	111.7	8.5	64.4
1993	45.5	22.9	68.4	5.0	2.5	7.5	75.9	38.0	113.9	9.9	66.6
1994	44.4	25.2	69.6	5.1	2.4	7.6	77.2	38.7	115.9	9.8	66.6
1994—											
December	47.0	26.6	73.6	2.8	1.6	4.4	78.0	38.7	116.6	5.6	66.8
1995—											
January	43.9	24.6	68.5	3.2	2.3	5.5	74.0	42.7	116.7	7.4	63.4
February	45.3	25.8	71.1	3.5	3.2	6.8	77.9	38.9	116.8	8.7	66.7
November	45.7	29.7	75.4	3.5	1.9	5.4	80.7	37.1	117.9	6.6	68.5
December	47.0	28.5	75.5	3.6	2.2	5.8	81.3	36.7	118.0	7.2	68.9
1996—											
January	46.6	25.0	71.7	3.8	2.4	6.2	77.9	40.2	118.1	8.0	66.0
February	44.6	27.8	72.4	4.0	3.5	7.5	80.0	38.2	118.1	9.4	67.7
PERSONS											
February—											
1992	111.2	31.7	142.9	9.9	3.4	13.3	156.2	60.9	217.1	8.5	72.0
1993	117.6	31.9	149.5	11.1	3.4	14.6	164.1	57.9	222.0	8.9	73.9
1994	118.5	34.4	152.9	11.9	4.3	16.1	169.0	58.0	227.0	9.5	74.5
1994—											
December	120.6	36.6	157.2	9.3	2.9	12.2	169.4	59.8	229.2	7.2	73.9
1995—											
January	116.2	33.3	149.5	9.1	3.7	12.9	162.4	66.9	229.2	7.9	70.8
February	117.9	36.2	154.1	9.4	4.7	14.1	168.2	61.1	229.3	8.4	73.3
November	118.3	41.6	159.9	8.8	3.1	11.9	171.8	59.3	231.2	6.9	74.3
December	122.0	39.6	161.6	9.0	3.6	12.6	174.2	57.1	231.3	7.2	75.3
1996—											
January	120.5	34.7	155.2	10.8	3.8	14.6	169.8	61.7	231.5	8.6	73.4
February	117.7	38.2	155.9	10.0	5.1	15.1	170.9	60.7	231.7	8.8	73.8

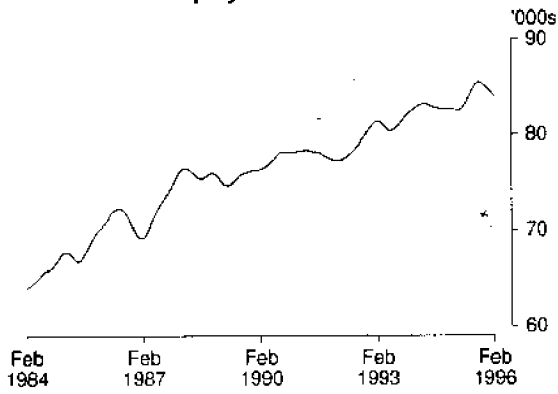
TABLE 21. LABOUR FORCE STATUS: TREND SERIES, ACT

Month	Employed (<i>'000</i>)	Unemployed (<i>'000</i>)	Labour force (<i>'000</i>)	Unemployment rate (per cent)	Participation rate (per cent)
MALES					
<i>February—</i>					
1992	77.3	6.2	83.6	7.5	79.2
1993	81.4	5.9	87.3	6.8	80.8
1994	82.9	6.7	89.6	7.5	80.6
<i>1994—</i>					
December	82.7	7.0	89.7	7.8	79.7
<i>1995—</i>					
January	82.7	6.9	89.5	7.7	79.6
February	82.6	6.8	89.4	7.6	79.4
March	82.5	6.8	89.4	7.6	79.4
April	82.7	7.0	89.7	7.8	79.7
May	83.2	7.2	90.4	7.9	80.2
June	83.9	7.3	91.2	8.0	80.8
July	84.6	7.4	91.9	8.0	81.4
August	85.2	7.3	92.4	7.9	81.7
September	85.5	7.2	92.6	7.7	81.8
October	85.4	7.0	92.5	7.6	81.7
November	85.1	6.9	92.1	7.5	81.3
December	84.8	6.9	91.6	7.5	80.8
<i>1996—</i>					
January	84.4	6.8	91.2	7.5	80.4
February	84.0	6.8	90.8	7.4	79.9
FEMALES					
<i>February—</i>					
1992	65.5	4.9	70.4	7.0	63.0
1993	69.8	5.3	75.2	7.1	66.0
1994	70.4	5.3	75.7	7.0	65.3
<i>1994—</i>					
December	71.5	4.9	76.4	6.4	65.5
<i>1995—</i>					
January	71.3	4.8	76.1	6.3	65.2
February	71.3	4.8	76.1	6.4	65.1
March	71.4	4.9	76.3	6.4	65.2
April	71.7	5.0	76.7	6.5	65.5
May	72.2	4.9	77.1	6.4	65.8
June	72.8	4.8	77.6	6.2	66.1
July	73.3	4.7	78.0	6.0	66.4
August	73.7	4.7	78.4	6.0	66.7
September	74.0	4.8	78.8	6.1	66.9
October	74.0	5.0	79.1	6.3	67.1
November	74.0	5.3	79.2	6.6	67.2
December	73.9	5.5	79.3	6.9	67.3
<i>1996—</i>					
January	73.7	5.6	79.4	7.1	67.2
February	73.6	5.7	79.3	7.2	67.1
PERSONS					
<i>February—</i>					
1992	142.8	11.1	153.9	7.2	70.9
1993	151.3	11.2	162.5	6.9	73.2
1994	153.3	12.0	165.3	7.2	72.8
<i>1994—</i>					
December	154.2	11.9	166.1	7.2	72.5
<i>1995—</i>					
January	154.0	11.7	165.7	7.1	72.3
February	153.8	11.6	165.5	7.0	72.1
March	153.9	11.7	165.6	7.1	72.2
April	154.4	11.9	166.4	7.2	72.4
May	155.4	12.1	167.5	7.2	72.8
June	156.7	12.1	168.8	7.2	73.3
July	157.9	12.1	169.9	7.1	73.7
August	158.9	12.0	170.9	7.0	74.1
September	159.4	12.0	171.4	7.0	74.2
October	159.5	12.0	171.5	7.0	74.2
November	159.1	12.2	171.3	7.1	74.1
December	158.6	12.3	171.0	7.2	73.9
<i>1996—</i>					
January	158.1	12.4	170.6	7.3	73.7
February	157.6	12.5	170.1	7.3	73.4

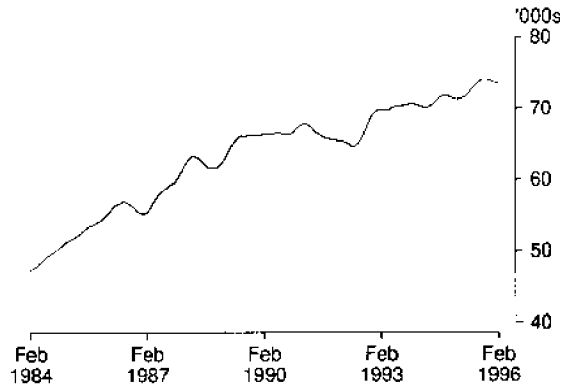
(a) See Explanatory Note 28.

TREND SERIES, ACT (a)

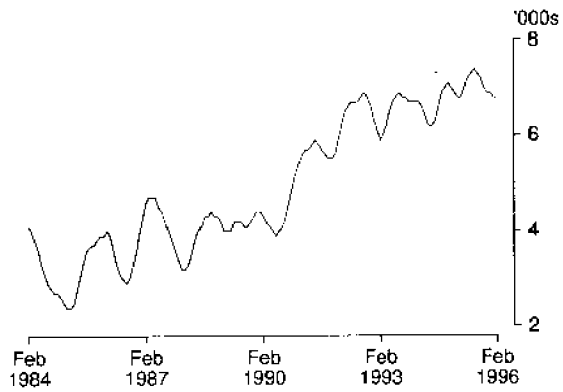
Employed males



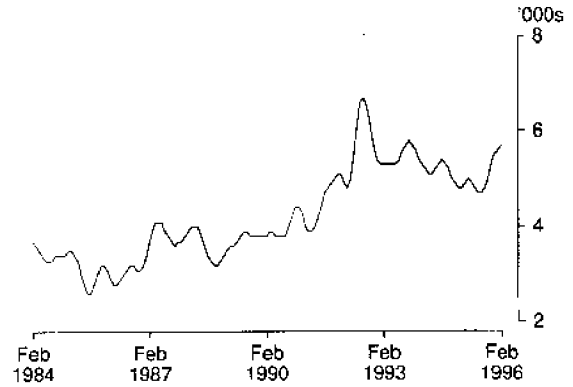
Employed females



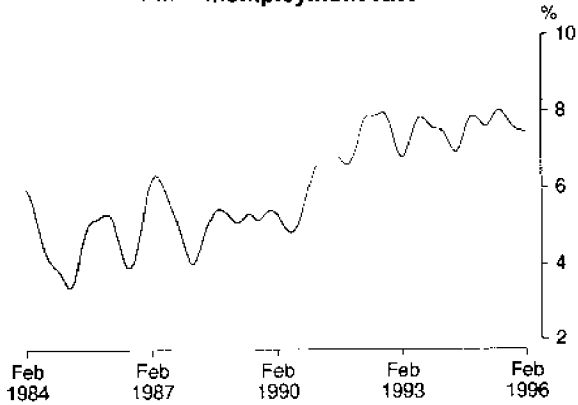
Unemployed males



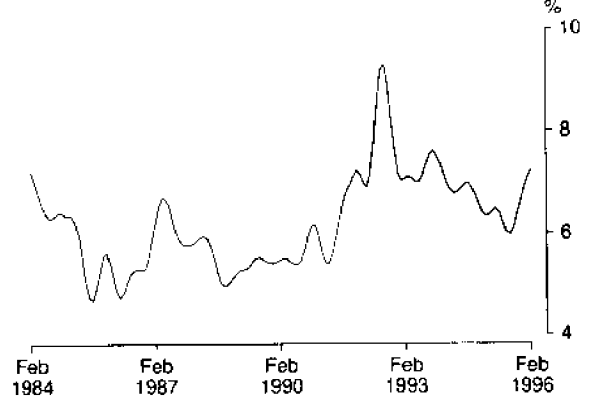
Unemployed females



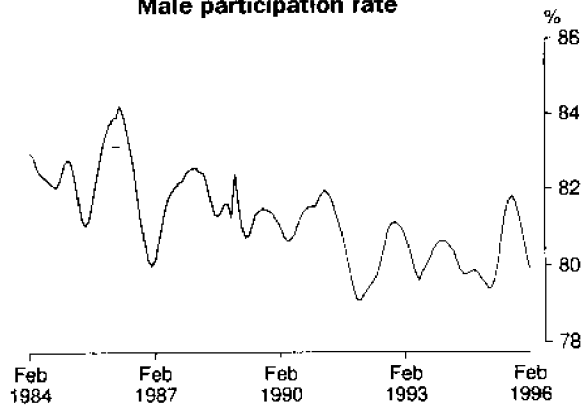
Male unemployment rate



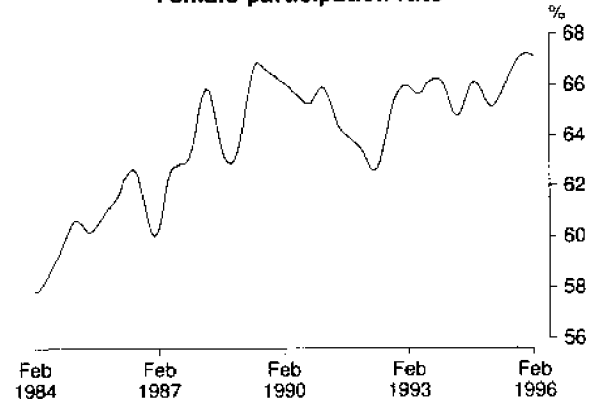
Female unemployment rate



Male participation rate



Female participation rate



(a) Comparisons between these graphs should not be made, as their vertical axes are not similarly scaled.

TABLE 22. LABOUR FORCE STATUS: AGE, ACT, FEBRUARY 1996

	Persons						Total
	Females			Age group (years)			
	Males	Married	Total	15-19	20-24	25 and over	
	— '000 —						
<i>Employed</i>	83.4	43.9	72.4	10.5	22.5	122.9	155.9
Full-time workers	73.1	26.8	44.6	2.6	16.4	98.7	117.7
Part-time workers	10.3	17.2	27.8	7.9	6.0	24.2	38.2
<i>Unemployed</i>	7.6	2.2	7.5	4.8	3.0	7.3	15.1
Looking for full-time work	5.9	1.2	4.0	2.0	2.6	5.4	10.0
Looking for part-time work	1.6	1.0	3.5	2.9	* 0.4	1.9	5.1
<i>Labour force</i>	91.0	46.1	80.0	15.4	25.4	130.1	170.9
Not in labour force	22.6	20.3	38.2	8.0	4.4	48.4	60.7
Aged 15-19 attending school	3.3	* 0.0	3.0	6.3	6.3
<i>Civilian population</i>	113.6	66.5	118.1	23.3	29.8	178.6	231.7
	— per cent —						
Unemployment rate	8.3	4.8	9.4	31.4	11.8	5.6	8.8
Looking for full-time work	7.5	4.3	8.3	42.9	13.9	5.2	7.8
Participation rate	80.1	69.4	67.7	65.9	85.4	72.9	73.8
Employment/population ratio	73.5	66.1	61.3	45.2	75.3	68.8	67.3
	— number —						
Average weekly hours worked by employed persons	40.0	30.9	30.2	17.4	32.9	37.4	35.4
Average duration of unemployment (weeks)	45.4	26.0	21.0	15.9	46.7	39.2	33.2

TABLE 23. NON-INSTITUTIONALISED PERSONS (a): LABOUR FORCE STATUS, BIRTHPLACE AND YEAR OF ARRIVAL, ACT, FEBRUARY 1996 ('000)

	Employed	Unemployed	Not in labour force	Labour force	Civilian population aged 15 and over
<i>Born in Australia</i>	118.0	11.0	36.2	128.9	165.1
<i>Born outside Australia</i>	37.9	4.1	20.8	42.0	62.9
Arrived before 1966	10.6	* 0.8	9.3	11.3	20.6
Arrived 1966-1970	6.4	* 0.1	2.9	6.5	9.4
Arrived 1971-1975	5.8	* 0.9	1.2	6.7	7.9
Arrived 1976-1980	4.2	* 0.3	1.2	4.5	5.7
Arrived 1981-1985	4.1	* 0.6	1.5	4.7	6.2
Arrived 1986-1990	4.2	* 0.5	2.0	4.7	6.7
Arrived 1991-1995	2.7	* 0.8	2.9	3.5	6.3
Arrived 1991 to survey date	2.7	* 0.9	2.9	3.6	6.5
<i>Main English speaking countries</i>	14.9	1.3	6.4	16.2	22.7
Arrived before 1966	4.3	* 0.4	3.1	4.8	7.9
Arrived 1966-1970	3.3	* 0.1	1.4	3.3	4.7
Arrived 1971-1975	2.1	* 0.4	* 0.5	2.5	3.0
Arrived 1976-1980	1.5	* 0.2	* 0.5	1.7	2.2
Arrived 1981-1985	1.7	* 0.1	* 0.4	1.9	2.3
Arrived 1986-1990	1.0	* 0.0	* 0.5	1.0	1.4
Arrived 1991-1995	1.0	* 0.1	* 0.1	1.1	1.2
Arrived 1991 to survey date	1.0	* 0.1	* 0.1	1.1	1.2
<i>Other than Main English speaking countries</i>	23.0	2.8	14.4	25.8	40.2
Arrived before 1966	6.2	* 0.3	6.2	6.5	12.7
Arrived 1966-1970	3.1	* 0.0	1.5	3.1	4.6
Arrived 1971-1975	3.7	* 0.6	* 0.7	4.2	4.9
Arrived 1976-1980	2.7	* 0.1	* 0.7	2.8	3.5
Arrived 1981-1985	2.4	* 0.5	1.1	2.9	3.9
Arrived 1986-1990	3.2	* 0.5	1.5	3.7	5.2
Arrived 1991-1995	1.7	* 0.7	2.7	2.4	5.1
Arrived 1991 to survey date	1.7	* 0.8	2.7	2.5	5.3
Total	155.9	15.1	57.0	170.9	228.0

(a) Excludes boarding school pupils.

TABLE 24. EMPLOYED PERSONS: INDUSTRY (a) AND OCCUPATION, ACT, FEBRUARY 1996
(^{'000})

Industry division and Major occupation group	Males	Females	Persons
Industry—			
Agriculture, forestry, fishing	*0.6	*0.2	*0.8
Mining	*0.0	*0.0	*0.0
Manufacturing	3.6	2.1	5.7
Electricity, gas and water supply	*0.5	*0.2	*0.7
Construction	6.2	*1.2	7.4
Wholesale trade	3.9	1.5	5.5
Retail trade	10.2	10.2	20.4
Accommodation, cafes and restaurants	4.5	4.0	8.5
Transport and storage	4.3	1.5	5.8
Communication services	1.6	*1.3	2.9
Finance and insurance	1.8	2.3	4.1
Property and business services	12.1	7.9	19.9
Government administration and defence	20.8	19.0	39.8
Education	4.9	8.3	13.1
Health and community services	2.1	8.3	10.3
Cultural and recreational services	3.3	1.9	5.2
Personal and other services	3.1	2.6	5.7
Occupation			
Managers and administrators	14.3	5.8	20.1
Professionals	19.7	13.4	33.1
Para-professionals	4.4	3.3	7.6
Tradespersons	12.5	1.4	13.9
Clerks	11.1	26.6	37.7
Salespersons and personal service workers	7.5	17.3	24.8
Plant and machinery operators, and drivers	4.5	*0.6	5.2
Labourers and related workers	9.4	4.1	13.5
Total employed	83.4	*72.4	155.9

(a) Industry data are now classified according to the Australian and New Zealand Standard Industrial Classification. See the Explanatory Notes for more details.

EMPLOYMENT BY INDUSTRY DIVISION, ACT, FEBRUARY 1996

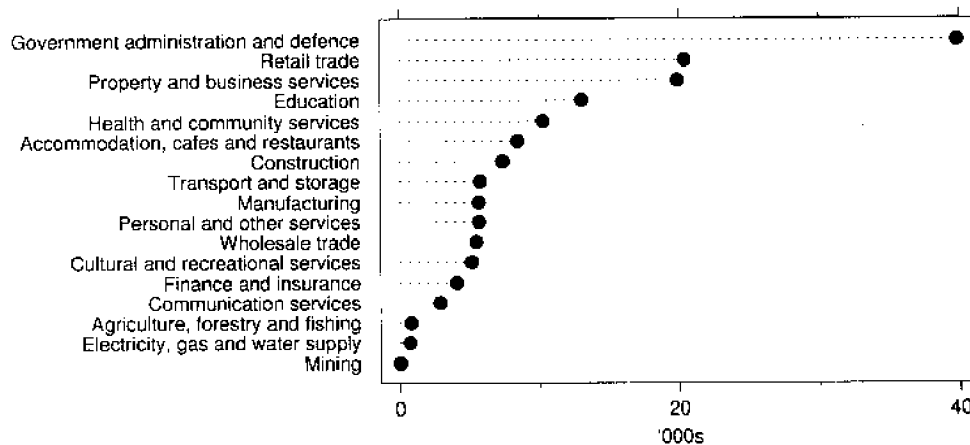
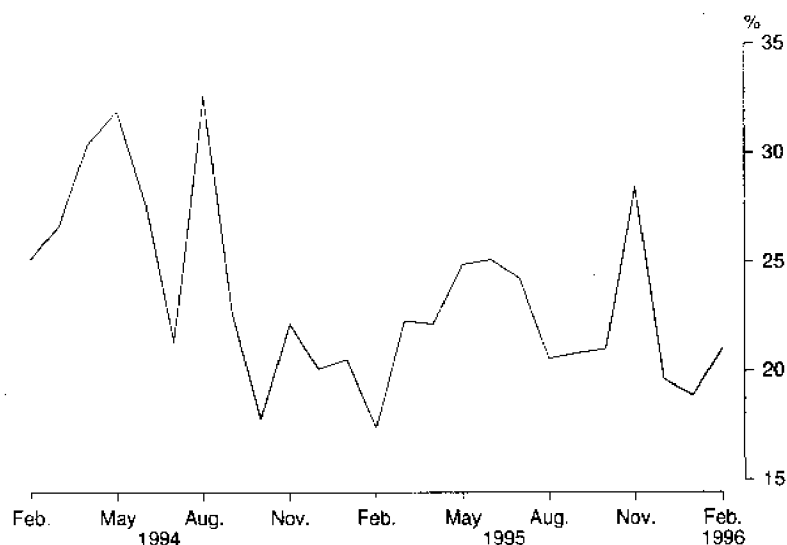


TABLE 25. LONG-TERM UNEMPLOYMENT, ACT

Month	Long-term unemployment									Long-term unemployment as a proportion of total unemployment		
	52 weeks and under 104			104 weeks and over			Total			Males (per cent)	Females (per cent)	Persons (per cent)
	Males ('000)	Females ('000)	Persons ('000)	Males ('000)	Females ('000)	Persons ('000)	Males ('000)	Females ('000)	Persons ('000)			
1994—												
December	* 0.6	* 0.3	* 0.9	1.1	* 0.4	1.5	1.7	* 0.7	2.5	22.0	16.7	20.1
1995—												
January	* 0.9	* 0.3	* 1.3	* 0.9	* 0.4	1.4	1.9	* 0.8	2.6	25.4	14.0	20.5
February	* 1.0	* 0.3	* 1.4	* 0.9	* 0.2	1.1	1.9	* 0.6	2.5	25.6	8.4	17.4
March	* 1.0	* 0.3	* 1.4	1.2	* 0.5	1.7	2.2	* 0.8	3.1	27.7	14.8	22.3
April	* 1.0	* 0.5	* 1.5	* 0.8	* 0.3	1.1	1.7	* 0.9	2.6	28.3	15.4	22.1
May	* 1.0	* 0.6	* 1.5	1.0	* 0.4	1.5	2.0	1.0	3.0	25.6	23.5	24.9
June	* 0.9	* 0.5	* 1.3	1.0	* 0.4	1.4	1.8	* 0.9	2.7	27.2	21.8	25.1
July	* 0.7	* 0.5	* 1.2	* 0.9	* 0.5	1.4	1.7	1.0	2.7	25.2	22.9	24.3
August	* 1.4	* 0.3	* 1.7	* 0.5	* 0.3	* 0.8	1.8	* 0.6	2.5	24.1	14.5	20.6
September	* 0.7	* 0.3	* 1.0	1.0	* 0.2	1.2	1.7	* 0.5	2.2	26.5	12.0	20.8
October	* 0.5	* 0.5	* 1.0	1.0	* 0.1	1.1	1.5	* 0.5	2.0	25.1	14.5	21.0
November	* 1.5	* 1.0	* 2.6	* 0.6	* 0.2	* 0.8	2.1	1.3	3.4	32.4	23.5	28.4
December	* 0.8	* 0.6	* 1.5	* 0.7	* 0.3	1.0	1.5	* 0.9	2.5	22.9	15.8	19.6
1996—												
January	* 1.5	* 0.7	* 2.1	* 0.4	* 0.2	* 0.6	1.9	* 0.9	2.8	22.1	14.5	18.9
February	* 1.1	* 0.6	* 1.7	1.1	* 0.4	1.5	2.2	* 0.9	3.2	29.6	12.3	21.0

LONG-TERM UNEMPLOYED AS A PROPORTION OF TOTAL UNEMPLOYED, ACT



LABOUR FORCE SUPPLEMENTARY TOPICS

Although emphasis in the population survey is placed on the regular collection of data on demographic and labour force characteristics, supplementary and special surveys of particular aspects of the labour force are carried out from time to time.

It has been recent ABS practice to release statistics from supplementary and special surveys in Section B of 6203.0 Labour Force, Australia. This practice ceased with the release of the February 1996 issue of 6203.0. For future releases of supplementary labour data, separate publications containing summary results and key findings will be produced.

Equivalent tables at the State level are available on microfiche. In addition, other unpublished data can be provided to meet special requirements.

Catalogue/ Product no.	Title of Publication/Standard Data Service	Price ¹ \$
6206.0.40.001*	Labour Force Experience, Australia, February 1995	17.50
6209.0	Labour Mobility, Australia, February 1994	13.00
6216.0.40.001*	Multiple Jobholding, Australia, August 1994	17.50
6220.0.40.001*	Persons Not in the Labour Force, Australia, September 1995	25.00
6222.0.40.001*	Job Search Experience of Unemployed Persons, Australia, July 1995	25.00
6224.0.40.001*	Labour Force Status and Other Characteristics of Families, Australia, June 1995	17.50
6227.0.40.001*	Transition from Education to Work, Australia, May 1995	20.00
6235.0	Labour Force Status and Educational Attainment, Australia, February 1994	13.00
6238.0.40.001*	Retirement and Retirement Intentions, Australia, November 1994	17.50
6243.0	Career Paths of Persons with Trade Qualifications, Australia, 1993	18.00
6245.0	Successful and Unsuccessful Job Search Experience, Australia, July 1994	13.00
6250.0	Labour Force Status and Other Characteristics of Migrants, Australia, September 1993	13.00
6254.0	Career Experience, Australia, February 1993	12.70
6264.0.40.001*	Persons who had re-entered the Labour Force, Australia, July 1995	25.00
6265.0.40.001*	Underemployed Workers, Australia, September 1995	25.00
6267.0.40.001*	Persons Who Have Left the Labour Force, Australia, September 1994	17.50
6272.0.40.001*	Participation in Education, Australia, September 1994	17.50
6275.0	Persons Employed at Home Australia, March 1992	12.50
6277.0	Career Paths of Qualified Nurses, Australia, March to July 1989	12.50
6278.0	Training and Education Experience, Australia, 1993	30.00
6310.0.40.001*	Weekly Earnings of Employees (Distribution), Australia, August 1995	25.00
6317.0	Annual and Long Service Leave Taken, Australia, May 1988 to April 1989	11.50
6319.0	Superannuation, Australia, November 1993	13.00
6325.0.40.001*	Trade Union Members, Australia, August 1994	17.50
6334.0.40.001*	Employment Benefits, Australia, August 1994	17.50
6342.0.40.001*	Working Arrangements, Australia, August 1995	25.00

¹ Prices quoted are subject to revision.

* Standard Data Service

Recent issues of Labour Force, Australia contain the principal results of the following supplementary surveys:

December 1995 issue

- Persons Who Had Re-entered the Labour Force, Australia, July 1995
- Weekly Earnings of Employees (Distribution), Australia, August 1995

January 1996 issue

- Persons Not in the Labour Force, Australia, September 1995
- Working Arrangements, Australia, August 1995

February 1996 issue

- Underemployed Workers, Australia, September 1995

EXPLANATORY NOTES

INTRODUCTION

1 This publication contains estimates of the labour force derived from the labour force survey component of the monthly population survey, which is conducted on a sample basis throughout Australia.

THE POPULATION SURVEY

2 This survey consists of the labour force survey (LFS) and, in most months, one or more supplementary topics. The survey is based on a multi-stage area sample of private dwellings (houses, flats, etc.) and non-private dwellings (hotels, motels, etc.) and covers slightly less than 0.5% of the population of New South Wales. The information is obtained from the occupants of selected dwellings by carefully chosen and specially trained interviewers. The interviews are generally conducted during the two weeks beginning on the Monday between the 6th and 12th of each month. The information obtained relates to the week before the interview (i.e. the reference week).

SCOPE

3 The labour force survey includes all persons aged 15 years and over, except:

- (a) members of the permanent defence forces;
- (b) certain diplomatic personnel of overseas governments, customarily excluded from census and estimated populations;
- (c) overseas residents in Australia; and
- (d) members of non-Australian defence forces (and their dependants) stationed in Australia.

SURVEY SAMPLE REDESIGN

4 Following each Population Census, the ABS redesigns and reselects the LFS to take into account the new information which is obtained from the Census. The sample used in the LFS from September 1987 to August 1992, which was designed and selected using data from the 1986 Census, has been updated and reselected using information collected in the 1991 Census. The new sample was phased in over the period September 1992 to December 1992.

5 For the most part, one quarter of the new sample was introduced each month so that, by December 1992, the entire new sample was in place.

POTENTIAL EFFECTS ON LABOUR FORCE SURVEY ESTIMATES

6 Implications for estimates produced from the LFS due to sample redesign and its implementation are as follows.

- (a) The sampling error overall increased initially by about 7% over the previous level but will decline gradually during the life of the new sample. For State estimates, the initial increase was about 8%, while for the Territories, there was a decrease of 19%. There were also higher standard errors for movements produced over the period September 1992 to December 1992 compared with those for the corresponding series produced prior to this period and from January 1993 onwards. Overall, these were estimated to be up to 20% higher than the normal standard errors on monthly movements.

DEFINITIONS

(b) Analysis has shown that the unemployment rate is marginally higher (less than 0.5 percentage points on average) for those persons in sample for the first time. Normally, this will not affect the overall estimates of month-to-month movements because the number of persons in the sample does not change significantly. However, during the transition period, there were twice as many people as usual in the sample for the first time. This may have caused a small upward movement (of less than 0.1 percentage points on average) in the unemployment rate from August 1992 to September 1992 and a compensating decrease from December 1992 to January 1993.

7 For further information, see *Information Paper: Labour Force Survey Sample Design* (6269.0).

8 The labour force category to which a person is assigned depends on the actual activity undertaken during the reference week (i.e. whether working, looking for work, etc.). The following definitions, which conform closely to the international standard definitions specified by the International Labour Office (ILO), relate only to those persons within the scope of the survey.

9 *Employed persons* comprise all civilians aged 15 years and over who, during the reference week:

- (a) worked for one hour or more for pay, profit, commission or payment in kind (including employees, employers and self-employed persons) in a job or business, or on a farm; or
- (b) worked for one hour or more without pay in a family business or on a farm (i.e. unpaid family helpers); or
- (c) were employees who had a job but were not at work and were: on paid leave; on leave without pay for less than four weeks up to the end of the reference week; stood down without pay because of bad weather or plant breakdown at their place of employment for less than four weeks up to the end of the reference week; on strike or locked out; on workers' compensation and expected to be returning to their job; or receiving wages or salary while undertaking full-time study; or
- (d) were employers, self-employed persons or unpaid family helpers who had a job, business or farm, but were not at work.

10 Prior to April 1986, unpaid family helpers who worked for 1–14 hours were excluded from the category of employed persons.

11 Employed persons can be classified into:

- (a) *full-time workers* (i.e. those who usually worked 35 hours or more a week (in all jobs) and others who, although usually part-time workers, worked 35 hours or more during the reference week); and
- (b) *part-time workers* (i.e. those who usually worked less than 35 hours a week and who did so during the reference week).

12 *Unemployed persons* are all those aged 15 years and over who were not employed during the reference week, and:

- (a) had actively looked for full-time or part-time work at any time in the four weeks up to the end of the reference week, and:
 - (i) were available for work in the reference week, or would have been available except for temporary illness (i.e. lasting for less than four weeks to the end of the reference week); or

- (ii) were waiting to start a new job within four weeks from the end of the reference week and would have started in the reference week if the job had been available then; or
- (b) were waiting to be called back to a full-time or part-time job from which they had been stood down without pay for less than four weeks up to the end of the reference week (including the whole of the reference week) for reasons other than bad weather or plant breakdown.

13 *Actively looking for work* includes writing, telephoning or applying in person to an employer for work; answering a newspaper advertisement for a job; checking factory or Commonwealth Employment Service notice-boards; being registered with the Commonwealth Employment Service; checking or registering with any other employment agency; advertising or tendering for work; and contacting friends or relatives.

14 *The unemployment rate* for any group is the number unemployed expressed as a percentage of the labour force (i.e. employed plus unemployed) in the same group.

15 The *labour force* comprises all persons who, during the reference week, were employed or unemployed as defined above.

16 *Long term unemployed* comprises persons unemployed for a period of 52 weeks or more.

17 *Persons not in the labour force* are those who, during the reference week, were not in the categories *employed* or *unemployed* as defined above.

18 *The labour force participation rate* for any group is the labour force expressed as a percentage of the civilian population aged 15 years and over in the same group.

19 *Duration of unemployment* is the period from the time the person began looking for work or was stood down to the end of the reference week.

20 *Unemployed persons classified by industry and occupation.* Unemployed persons who had worked full-time for two weeks or more in the last two years are classified according to the industry and occupation of their most recent full-time job.

21 *Industry classification.* From August 1994, Labour Force Survey industry data are classified according to the *Australian and New Zealand Standard Industrial Classification (ANZSIC) 1993 (1292.0)*. For further information about the application of ANZSIC to Labour Force Survey data, see *Information Paper Labour Force Survey: Introduction of ANZSIC for industry data (6259.0)*.

22 *Occupation classification.* Occupation data are presented in accordance with the *Australian Standard Classification of Occupations (ASCO) (1221.0 and 1222.0)*.

23 *Marital status.* In the labour force survey, persons are classified as *married* or *not married*. Persons are classified as *married* if they are reported as being married (including de facto) and their spouse was a usual resident of the household at the time of the survey.

24 *Persons attending school or a tertiary educational institution.*

Persons attending school comprise those aged 15–19 years who, during the reference week, were enrolled full-time at secondary or high schools (including boarding school pupils). Persons attending a tertiary educational institution comprise those aged 15–24 years who were enrolled full-time at universities, colleges of advanced education, technical colleges, colleges of technical and further education, and theological colleges.

25 *Employment/population ratio.* For any group, the number of employed persons expressed as a percentage of the civilian population aged 15 years and over in the same group.

STATISTICAL AREAS

26 The regional structure for NSW used in tables 16–19 is based on the Statistical Region structure of the Australian Standard Geographical Classification (ASGC). For further information concerning statistical areas, please refer to pages 53–57 and the publications *Regional Statistics, New South Wales* (1304.1) and *Australian Standard Geographical Classification* (1216.0).

SEASONAL ADJUSTMENT AND
TREND ESTIMATION

27 Seasonal adjustment is a means of removing the estimated effects of normal seasonal variation from the series so that the effects of other influences on the series can be more clearly recognised. Seasonal adjustment does not aim to remove the irregular or non-seasonal influences which may be present in any particular month. This means that month-to-month movements of the seasonally adjusted estimates may not be reliable indicators of trend behaviour. For example, irregular factors unrelated to the trend account for more than half the seasonally adjusted movement with the following frequency:

- (a) Employment: 5 in 10 monthly movements
- (b) Unemployment: 7 in 10 monthly movements
- (c) Unemployment rate: 7 in 10 monthly movements
- (d) Participation rate: 9 in 10 monthly movements

28 Smoothing seasonally adjusted series produces a measure of the underlying trend by reducing the impact of the irregular component of the series. The trend estimates are derived by applying a 13-term Henderson-weighted moving average to the respective seasonally adjusted series. While this smoothing technique enables estimates to be produced which include the latest month, it does result in revisions to the most recent months as additional observations become available.

29 Seasonally adjusted series for NSW appear in this publication in Table 2. Trend estimates for NSW and ACT appear in Tables 2 and 21 respectively. Seasonally adjusted data is not available for ACT.

RELIABILITY OF THE ESTIMATES

30 Estimates in this publication are subject to sampling and non-sampling errors. The Technical Note on pages 47–52 of this publication gives information on these sources of error.

RELATED PUBLICATIONS

31 Users may also wish to refer to the following related publications which are available from the ABS Bookshop:

- *Regional Statistics, New South Wales* (1304.1) issued annually
- *Australian Capital Territory Business Indicators* (1303.8) issued monthly
- *Australian Capital Territory Statistical Summary* (1307.8) issued annually
- *Australian Capital Territory at a Glance* (1314.8) issued annually

- *A Guide to Smoothing Time Series — Estimates of 'Trend'* (1316.0)
- *Time Series Decomposition — An Overview* (1317.0)
- *Labour Statistics, Australia* (6101.0) issued annually
- *A Guide to Labour Statistics* (6102.0)
- *Labour Force, Australia, Preliminary* (6202.0) issued monthly
- *Labour Force, Australia* (6203.0) issued monthly
- *Employed Wage and Salary Earners, Australia* (6248.0) issued quarterly
- *Information Paper: Labour Force Survey: Introduction of ANZSIC for Industry Data* (6259.0)
- *Information Paper: Labour Force Survey — Sample Design* (6269.0)
- *Information Paper: Labour Force Survey — Measuring Teenage Unemployment* (6270.0)
- *Technical Paper: The Labour Force, Australia: Preliminary Data on Floppy Disk — Technical Details* (6271.0)

ADDITIONAL DATA

32 In addition to the labour force survey, the ABS publishes a wide range of supplementary labour market information. For details see page 39 of this publication.

33 The ABS can also make available information which is not published. This information may be made available in one or more of the following forms: microfiche, photocopy, data tape, floppy disk, computer printout, clerically-extracted tabulation. In general, a charge is made for providing unpublished information.

ROUNDING

34 Figures have been rounded and discrepancies may occur between sums of the component items and the totals shown.

SYMBOLS AND OTHER USAGES

A	Area
C	City
MSR	Major Statistical Region
n.e.c.	not elsewhere classified
SD	Statistical Division
SR	Statistical Region
SRS	Statistical Region Sector
*	subject to sampling variability too high for most practical purposes. See paragraph 6 of the Technical Note on Data Reliability.
—	nil or rounded to zero (including null cells)

TECHNICAL NOTE ON DATA RELIABILITY

SOURCES OF ERROR

1 There are a number of possible sources of error in sample surveys and these can be classified into two types: *sampling error*; and *non-sampling error*.

NON-SAMPLING ERRORS

2 Non-sampling errors may arise as a result of errors in the reporting, recording or processing of the data and can occur even if there is a complete enumeration of the population. Non-sampling errors can be introduced through: inadequacies in the questionnaire; non-response; inaccurate reporting by respondents; errors in the application of survey procedures; incorrect recording of answers; and errors in data entry and processing.

3 It is difficult to measure the size of the non-sampling errors and the extent of these errors could vary considerably in significance from survey to survey, and from question to question. However, every effort is made in the design of the survey and development of survey procedures to minimise the effect of these errors.

SAMPLING ERRORS

4 Sampling error is the error which occurs by chance because the data were only obtained from a sample, not the entire population.

Standard error of estimates

5 One measure of the variability of estimates which occurs as a result of surveying only a sample of the population is the *standard error* (SE). There are about 2 chances in 3 that a survey estimate is within one standard error of the figure that would have been obtained if all persons had been included and about 19 chances in 20 that it is within two standard errors. That is, there are 19 chances in 20 that the true estimate is in the range—

$$X - 2 \times SE(X) \text{ to } X + 2 \times SE(X)$$

(where X is the estimate)

The standard error of an estimate can be obtained from Table A. Linear interpolation should be used to calculate the standard error of estimates falling between the sizes of estimates listed in the table (see example below Table A).

6 In the tables in this publication, only estimates with relative standard errors of 25% or less, and percentages based on such estimates, are considered sufficiently reliable for most purposes. However, estimates and percentages with larger relative standard errors have been included and are preceded by an asterisk (e.g. * 3.4) to indicate they are subject to high standard errors and should be used with caution.

7 The standard error can also be expressed as a percentage of the estimate and this is known as the *relative standard error* (RSE). The RSE is determined by dividing the standard error of an estimate $SE(X)$ by the estimate X and expressing it as a percentage. That is

$$RSE(X) = \frac{SE(X) \times 100}{X}$$

(where X is the estimate)

8 The look up list on the following page provides a guide for the calculation of standard errors and relative standard errors for a range of statistics.

CALCULATING STANDARD ERRORS

The methods described below refer to the calculation of standard errors for NSW estimates. Standard errors of ACT estimates should be calculated from Table C, using column 2 (from September 1992) instead of Table A and column 3 (Monthly movements for December 1992–January 1993 onwards) instead of Table B.

<i>Measure of reliability to be determined</i>	<i>Method</i>
Standard errors of estimates of employed persons.	Determine the SE from Table A directly.
Standard errors of estimates of unemployed persons.	Multiply the SE from Table A by 1.06.
Standard errors of estimates of persons not in the labour force.	Multiply the SE from Table A by 1.1.
Standard errors of rates (e.g. the unemployment rate which is based on the number of unemployed persons expressed as a percentage of the number of persons in the labour force).	Determine the RSE of the numerator (<i>X</i>) and the denominator (<i>Y</i>) then apply the following formula. $RSE\left(\frac{X}{Y}\right) = \sqrt{[RSE(X)]^2 - [RSE(Y)]^2}$
Standard error of average duration of unemployment.	Determine the RSE for the number of persons on which the average is based and multiply this by 1.3.
Standard error of median duration of unemployment.	Determine the RSE for the number of persons on which the average is based and multiply this by 2.0.
Standard error of monthly movements.	Using Table B, look up the SE of the larger estimate.
Standard error of quarterly movements.	Determine the standard error of the larger estimate (using Table A) and multiply this by 1.11.
Standard error of annual movements.	Determine the standard error of the larger estimate (using Table A) and multiply this by 1.3.

9 Linear interpolation is used to determine the standard error of an estimate which falls between two values listed in the *size of estimate* column in Tables A or B. Linear interpolation is best described using an example. In February 1996, there were 632 200 (X_e) employed persons working part-time in New South Wales. This estimate falls between the values 5 000 000 (X_l) and 1 000 000 (X_u) in Table A.

10 The standard error of the estimate is determined as follows. Firstly calculate

$$\begin{aligned}
 F &= \frac{X_e - X_l}{X_u - X_l} \\
 &= \frac{632\,200 - 500\,000}{1\,000\,000 - 500\,000} \\
 &= 0.26
 \end{aligned}$$

11 Secondly, calculate the standard error of the estimate, $SE(X_e)$ thus:

$$\begin{aligned}
 SE(X_e) &= SE(X_l) + (F \times [SE(X_u) - SE(X_l)]) \\
 &= 8\,800 + (0.26 \times [11\,300 - 8\,000]) \\
 &= 9\,658
 \end{aligned}$$

12 Therefore the standard error of the number of employed persons in February 1996 working part-time in New South Wales (632 200) is 9 658.

A

STANDARD ERRORS OF ESTIMATES: REGIONS OF NSW FROM SEPTEMBER 1992¹

Size of estimate	Regions in Sydney (MSR)							
	NSW; Sydney (MSR); Balance of NSW (MSR)	Inner Sydney and Inner ..					Fairfield-Liverpool and Outer South	
		Western Sydney (SRs)	Inner Sydney (SR)	Eastern Suburbs (SR)	St George-Sutherland (SR)	Canterbury-Bankstown (SR)	Western Sydney (SRs)	Fairfield-Liverpool (SR)
500	420	340	330	300	300	280	330	290
1000	590	500	480	430	430	410	470	410
3000	1000	890	860	770	780	740	850	750
5000	1300	1150	1150	1000	1050	970	1100	980
10000	1750	1700	1650	1500	1500	1400	1650	1450
20000	2400	2450	2450	2200	2200	2100	2350	2100
50000	3550	4050	4050	3650	3700	3500	3850	3500
100000	4750	5900	6000	5400	5500	5200	5600	5200
200000	6200	8600	8900	8000	8100	7700	8200	7700
300000	7300	10700	11300	10100	10200	9700	10200	9800
500000	8800	14 200	15 200	13 600	13 800	13 000	13 500	13 100
1000000	11 300							
2000000	14 300							
5 000 000	19 300							

Size of estimate	Regions in Sydney (MSR)—continued							
	Central Western Sydney (SR)	Outer Western Sydney (SR)	Blacktown-Baulkham Hills (SR)	Lower Northern Sydney (SR)	Hornsby-Ku-ring-gai (SR)	Northern Beaches (SR)	Gasford-Wyong (SR)	
500	300	310	270	360	320	250	330	
1000	440	450	390	520	460	360	470	
3000	790	820	700	940	830	650	850	
5000	1050	1100	920	1250	1100	860	1150	
10000	1500	1550	1350	1800	1600	1250	1650	
20000	2250	2300	1950	2650	2350	1850	2400	
50000	3750	3850	3300	4450	3900	3100	4050	
100 000	5500	5700	4850	6500	5800	4550	6000	
200 000	8200	8500	7200	9700	8600	6800	8900	
300 000	10 300	10 700	9 100	12 300	10 900	8 500	11 200	

Size of estimate	Regions in Balance of NSW (MSR)							
	Hunter (SR)	Newcastle (SRS)	Illawarra and South Eastern (SRs)	Illawarra (SR)	Wollongong (SRS)	Richmond-Tweed and Mid-North Coast (SRs)	Northern, Far West-North Western and Central West (SRs)	Murray-Murrumbidgee (SR)
500	350	330	330	310	270	370	360	360
1000	500	480	480	450	390	530	520	520
3000	900	870	870	810	710	950	940	940
5000	1200	1150	1150	1050	940	1250	1250	1250
10000	1700	1650	1650	1550	1350	1850	1800	1800
20000	2500	2450	2400	2250	2000	2700	2650	2650
50000	4100	4100	3950	3700	3350	4500	4450	4400
100 000	6000	6000	5700	5400	4950	6600	6600	6500
200 000	8700	9000	8400	7800	7300	9900	9800	9700
300 000	10 900	11300	10400	9800	9300	12400	12300	12 300

¹ For standard errors for earlier periods, see previous issues of this publication.

B

**STANDARD ERRORS OF MONTH TO MONTH MOVEMENTS:
REGIONS OF NSW FROM DECEMBER 1992–JANUARY 1993 ONWARDS ¹**

Size of estimate	Regions in Sydney (MSR)							
	NSW; Sydney (MSR); Balance of NSW (MSR)	Inner Sydney and Inner Western Sydney (SRs)	Inner Sydney (SR)	Eastern Suburbs (SR)	St George–Sutherland (SR)	Canterbury–Bankstown (SR)	Fairfield–Liverpool and Outer South Western Sydney (SRs)	Fairfield–Liverpool (SR)
500	540	330	270	260	240	240	290	220
1000	690	440	360	350	330	330	390	300
3000	1050	700	600	580	540	540	630	500
5000	1250	870	750	730	680	680	780	630
10000	1600	1150	1050	990	930	930	1050	860
20000	2050	1550	1400	1350	1250	1250	1400	1150
50000	2900	2300	2150	2050	1950	1900	2050	1750
100000	3700	3100	2900	2800	2650	2650	2800	2400
200000	4750	4200	4000	3850	3600	3600	3750	3300
300000	5500	5000	4800	4600	4350	4300	4400	4400
500000	6700	6200	6000	5800	5400	5400	5500	5000
1000000	8600							
2000000	11100							
5 000 000	15500							

Size of estimate	Regions in Sydney (MSR)—continued							
	Central Western Sydney (SR)	Outer Western Sydney (SR)	Blacktown–Baulkham Hills (SR)	Lower Northern Sydney (SR)	Hornsby–Ku-ring-gai (SR)	Northern Beaches (SR)	Gosford–Wyong (SR)	
500	220	240	250	290	230	210	270	
1000	300	330	340	400	310	280	380	
3000	490	540	560	660	510	470	620	
5000	610	680	700	830	640	590	780	
10000	840	940	960	1150	870	800	1050	
20000	1150	1300	1300	1550	1200	1100	1450	
50000	1750	1950	2000	2350	1800	1650	2200	
100 000	2350	2650	2700	3200	2450	2250	3000	
200 000	3250	3600	3700	4400	3400	3100	4100	
300 000	3900	4350	4450	5300	4050	3750	4950	

Size of estimate	Regions in Balance of NSW (MSR)							
	Hunter (SR)	Newcastle (SRS)	Illawarra and South Eastern (SRs)	Illawarra (SR)	Wollongong (SRS)	Richmond–Tweed and Mid-North Coast (SRs)	Northern, Far West–North Western and Central West (SRs)	Murray–Murrumbidgee (SR)
500	320	280	340	340	260	300	340	290
1000	430	390	460	460	350	420	470	400
3000	690	640	740	730	580	680	760	660
5000	860	800	910	910	730	860	960	830
10000	1150	1100	1250	1200	990	1200	1300	1150
20000	1550	1500	1650	1650	1350	1600	1800	1550
50000	2300	2250	2450	2400	2050	2450	2750	2350
100 000	3100	3100	3250	3250	2800	3350	3750	3200
200 000	4150	4250	4400	4350	3850	4550	5100	4350
300 000	4900	5100	5200	5200	4600	5500	6100	5200

¹ For standard errors for earlier periods, see previous issues of this publication.

C**STANDARD ERRORS OF ESTIMATES, ACT**

<i>Size of estimate</i>	<i>From September 1992¹</i>	<i>Monthly movements for December 1992– January 1993 onwards¹</i>
500	180	150
1 000	240	220
3 000	390	320
5 000	490	390
10 000	640	500
20 000	840	640
50 000	1 200	900
100 000	1 550	1 150
200 000	1 950	1 500
300 000	2 250	1 750

¹ For standard errors for earlier periods, see *Labour Force, Australia* (6203.0).

APPENDIX

REGIONS OF NSW AND THEIR STATISTICAL LOCAL AREAS

<i>Major Statistical Region</i>	<i>Statistical Region/Statistical Region Sector</i>	<i>Statistical Local Area</i>
SYDNEY	Inner Sydney and Inner Western Sydney (SRs)	Ashfield (A) Botany (A) Burwood (A) Concord (A) Drummoyne (A) Leichhardt (A) Marrickville (A) South Sydney (C) Strathfield (A) Sydney (C) — Inner Sydney (C) — Remainder
	Inner Sydney (SR)	Botany (A) Leichhardt (A) Marrickville (A) South Sydney (C) Sydney (C) — Inner Sydney (C) — Remainder
	Eastern Suburbs (SR)	Randwick (C) Waverley (A) Woollahra (A)
	St George–Sutherland (SR)	Hurstville (C) Kogarah (A) Rockdale (A) Sutherland Shire (A)
	Canterbury–Bankstown (SR)	Bankstown (C) Canterbury (A)
	Fairfield–Liverpool and Outer South Western Sydney (SRs)	Camden (A) Campbelltown (C) Fairfield (C) Liverpool (C) Wollondilly (A)
	Fairfield–Liverpool (SR)	Fairfield (C) Liverpool (C)
	Central Western Sydney (SR)	Auburn (A) Holroyd (C) Parramatta (C)
	Outer Western Sydney (SR)	Blue Mountains (C) Hawkesbury (C) Penrith (C)

Major Statistical Region	Statistical Region/Statistical Region Sector	Statistical Local Area
SYDNEY —continued		
	Blacktown—Baulkham Hills (SR)	Baulkham Hills (A) Blacktown (C)
	Lower Northern Sydney (SR)	Hunter's Hill (A) Lane Cove (A) Mosman (A) North Sydney (A) Ryde (C) Willoughby (C)
	Hornsby—Ku-ring-gai (SR)	Hornsby (A) Ku-ring-gai (A)
	Northern Beaches (SR) ¹	Manly (A) Pittwater (A) Warringah (A)
	Gosford—Wyong (SR)	Gosford (C) Wyong (A)
BALANCE OF NSW ²		
	Hunter (SR)	Cessnock (C) Dungog (A) Gloucester (A) Great Lakes (A) Lake Macquarie (C) Maitland (C) Merriwa (A) Murrurundi (A) Muswellbrook (A) Newcastle (C) — Inner Newcastle (C) — Remainder Port Stephens (A) Scone (A) Singleton (A)
	Newcastle (SRS)	Cessnock (C) Lake Macquarie (C) Maitland (C) Newcastle (C) — Inner Newcastle (C) — Remainder Port Stephens (A)

BALANCE OF NSW—continued

Illawarra and South Eastern (SRs)	Bega Valley (A)
	Bombala (A)
	Boorowa (A)
	Cooma—Monaro (A)
	Crookwell (A)
	Eurobodalla (A)
	Goulburn (C)
	Gunning (A)
	Harden (A)
	Kiama (A)
	Mulwaree (A)
	Queanbeyan (C)
	Shellharbour (A)
	Shoalhaven (C)
	Snowy River (A)
	Tallaganda (A)
	Wingecarribee (A)
	Wollongong (C)
	Yarrowlumla (A)
	Yass (A)
Young (A)	
Illawarra (SR)	Kiama (A)
	Shellharbour (A)
	Shoalhaven (C)
	Wingecarribee (A)
	Wollongong (C)
Wollongong (SRS)	Kiama (A)
	Shellharbour (A)
	Wollongong (C)
Richmond—Tweed and Mid-North Coast (SRs)	Ballina (A)
	Bellingen (A)
	Byron (A)
	Casino (A)
	Coffs Harbour (C)
	Copmanhurst (A)
	Grafton (C)
	Greater Taree (C)
	Hastings (A)
	Kempsey (A)
	Kyogle (A)
	Lismore (C)
	Lord Howe Island
	Maclean (A)
	Nambucca (A)
	Nymboida (A)
	Richmond River (A)
	Tweed (A) — Part A
Tweed (A) — Part B	
Ulmarra (A)	

BALANCE OF NSW—continuedNorthern, Far West—North Western
and Central West (SRs)²

Armidale (C)
 Barraba (A)
 Bathurst (C)
 Bingara (A)
 Bland (A)
 Blayney (A) — Part A
 Blayney (A) — Part B
 Bogan (A)
 Bourke (A)
 Brewarrina (A)
 Cabonne (A) — Part A
 Cabonne (A) — Part B
 Cabonne (A) — Part C
 Cobar (A)
 Coolah (A)
 Coonabarabran (A)
 Coonamble (A)
 Cowra (A)
 Dubbo (C)
 Dumaresq (A)
 Evans (A) — Part A
 Evans (A) — Part B
 Forbes (A)
 Gilgandra (A)
 Glen Innes (A)
 Greater Lithgow (C)
 Gunnedah (A)
 Guyra (A)
 Inverell (A) — Part A
 Inverell (A) — Part B
 Lachlan (A)
 Manilla (A)
 Moree Plains (A)
 Mudgee (A)
 Narrabri (A)
 Narromine (A)
 Nundle (A)
 Oberon (A)
 Orange (C)
 Parkes (A)
 Parry (A)
 Quirindi (A)
 Rylstone (A)
 Severn (A)
 Tamworth (C)
 Tenterfield (A)
 Uralla (A)
 Walcha (A)
 Walgett (A)
 Warren (A)
 Weddin (A)
 Wellington (A)
 Yallaroi (A)

BALANCE OF NSW—continued

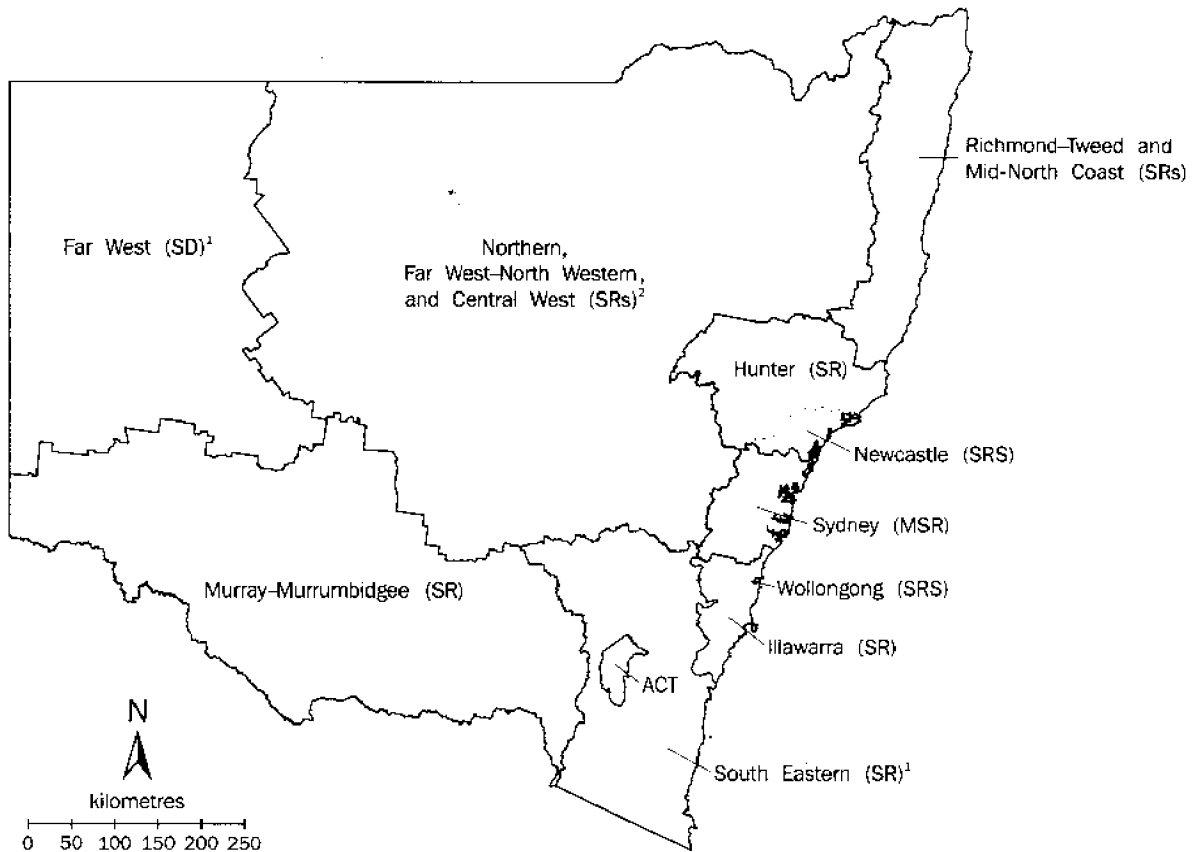
Murray–Murrumbidgee (SR)

Albury (C)
 Balranald (A)
 Berrigan (A)
 Carrathool (A)
 Conargo (A)
 Coolamon (A)
 Cootamundra (A)
 Corowa (A)
 Culcairn (A)
 Deniliquin (A)
 Griffith (C)
 Gundagai (A)
 Hay (A)
 Holbrook (A)
 Hume (A)
 Jerilderie (A)
 Junee (A)
 Leeton (A)
 Lockhart (A)
 Murray (A)
 Murrumbidgee (A)
 Narrandera (A)
 Temora (A)
 Tumbarumba (A)
 Tumut (A)
 Urana (A)
 Wagga Wagga (C)
 Wakool (A)
 Wentworth (A)
 Windouran (A)

¹ Previously Manly–Warringah (SR).

² The statistical local areas which comprise Far West (SD) — Broken Hill (C), Central Darling (A), and Unincorporated Far West — are included in Balance of NSW (MSR), but excluded from Northern, Far West–North Western and Central West (SRs).

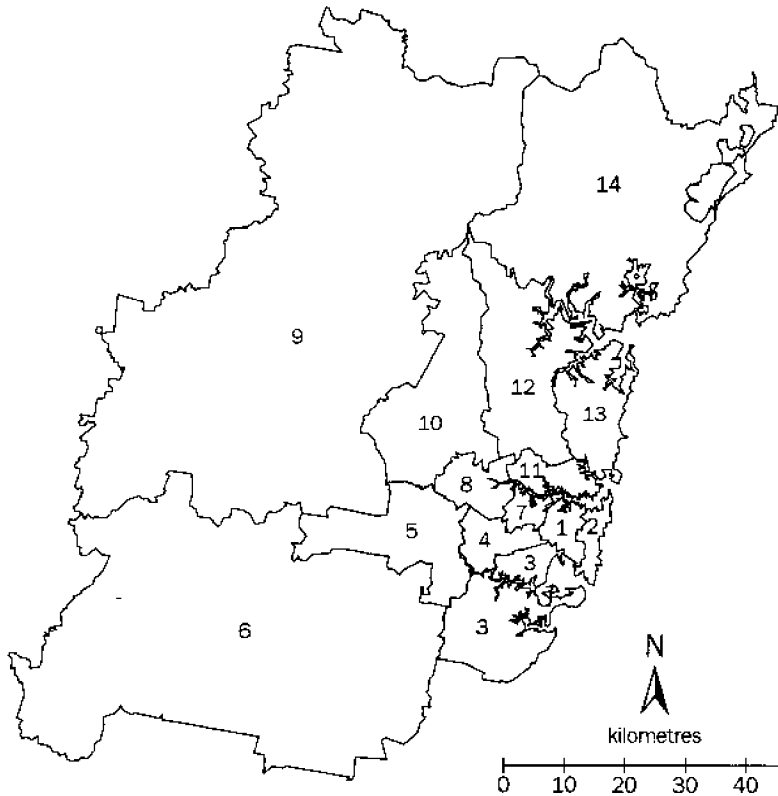
REGIONS OF NSW



¹ Not published separately

² Excludes Far West (SD)

REGIONS OF SYDNEY (MSR)



- 1. Inner Sydney (SR)
- 2. Eastern Suburbs (SR)
- 3. St George-Sutherland (SR)
- 4. Canterbury-Bankstown (SR)
- 5. Fairfield-Liverpool (SR)
- 6. Outer South Western Sydney (SR)¹
- 7. Inner Western Sydney (SR)¹
- 8. Central Western Sydney (SR)
- 9. Outer Western Sydney (SR)
- 10. Blacktown-Baulkham Hills (SR)
- 11. Lower Northern Sydney (SR)
- 12. Hornsby-Ku-ring-gai (SR)
- 13. Northern Beaches (SR)
- 14. Gosford-Wyong (SR)

¹ Not published separately



For more information . . .

The ABS publishes a wide range of statistics and other information on Australia's economic and social conditions. Details of what is available in various publications and other products can be found in the ABS Catalogue of Publications and Products available from all ABS Offices.

ABS Products and Services

Many standard products are available from ABS bookshops located in each State and Territory. In addition to these products, information tailored to the needs of clients can be obtained on a wide range of media by contacting your nearest ABS Office. The ABS also provides a Subscription Service for standard products and some tailored information services.

National Dial-a-Statistic Line

0055 86 400

Steadycom P/L: premium rate 25c/21.4 secs.

This number gives 24-hour access, 365 days a year, for a range of important economic statistics including the CPI.

Internet

<http://www.statistics.gov.au>

A wide range of ABS information is available via the Internet, with basic statistics available for each State, Territory and Australia. We also have Key National Indicators, ABS product release details and other information of general interest.

Sales and Inquiries

Keylink STAT.INFO/ABS
X.400 (C:Australia,PUB:Telememo,O:ABS,FN:STAT,SN:INFO)
Internet stat.info@abs.telememo.au

National Mail Order Service (06) 252 5249
Subscription Service 1800 02 0608

Information Inquiries Bookshop Sales

SYDNEY	(02)	268 4611	268 4620
MELBOURNE	(03)	9615 7755	9615 7755
BRISBANE	(07)	3222 6351	3222 6350
PERTH	(09)	360 5140	360 5307
ADELAIDE	(08)	237 7100	237 7582
HOBART	(002)	205 800	205 800
CANBERRA	(06)	252 6627	207 0326
DARWIN	(089)	432 111	432 111



Client Services, ABS, PO Box 10, Belconnen ACT 2616



2620110002961
ISSN 1322-0179

Recommended retail price: \$17.00